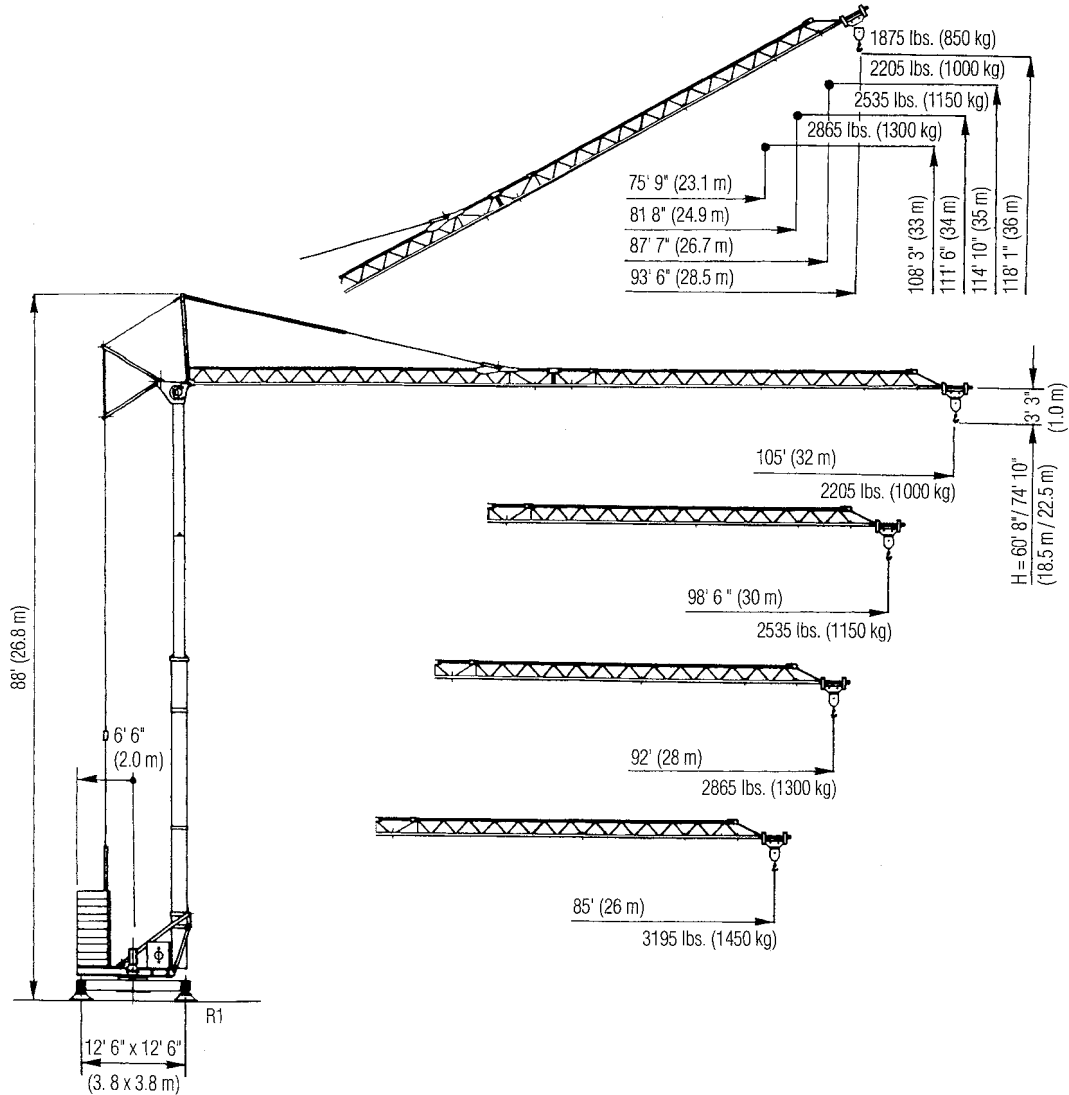




COMEDIL CBR 32

Self-Erecting Tower Crane
6615 lbs. (3000 kg)
Lifting Capacity

SPECIFICATIONS



Ranges and Capacity

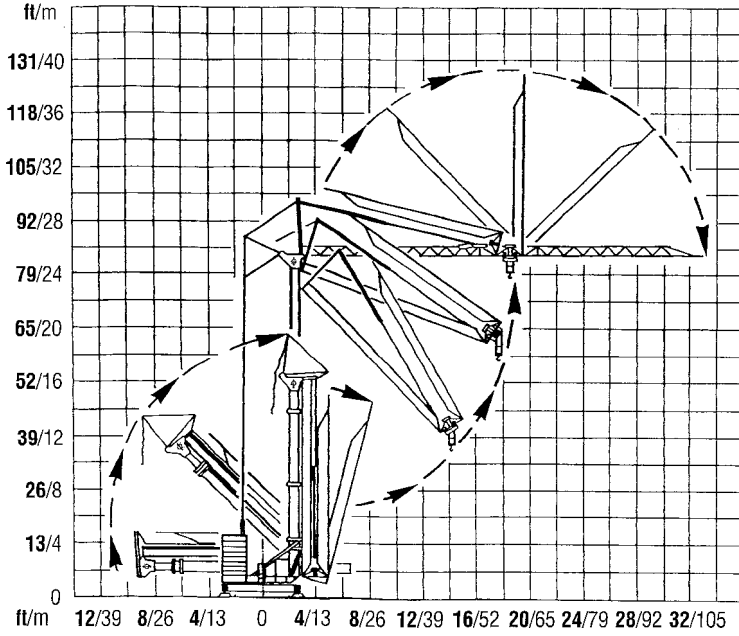
	ft. (m)	46 (14)	52.5 (16)	59 (18)	65.5 (20)	72 (22)	79 (24)	85 (26)	92 (28)	98.5 (30)	105 (32)
6615 lbs. (3000 kg) – 42' (12.9 m)	lbs. (kg)	5955 (2700)	5050 (2290)	4365 (1980)	3835 (1740)	3415 (1550)	3065 (1390)	2780 (1260)	2515 (1140)	2315 (1050)	2205 (1000)
6615 lbs. (3000 kg) – 44' (13.4 m)	lbs. (kg)	6260 (2840)	5315 (2410)	4610 (2090)	4035 (1830)	3595 (1630)	3240 (1470)	2930 (1330)	2670 (1210)	2535 (1150)	
6615 lbs. (3000 kg) – 45' (13.7 m)	lbs. (kg)	6480 (2940)	5490 (2490)	4760 (2160)	4190 (1900)	3725 (1690)	3350 (1520)	3020 (1370)	2865 (1300)		
6615 lbs. (3000 kg) – 46' (13.9 m)	lbs. (kg)	6570 (2980)	5580 (2530)	4830 (2190)	4235 (1920)	3770 (1710)	3395 (1540)	3195 (1450)			

Machines shown may have optional equipment.

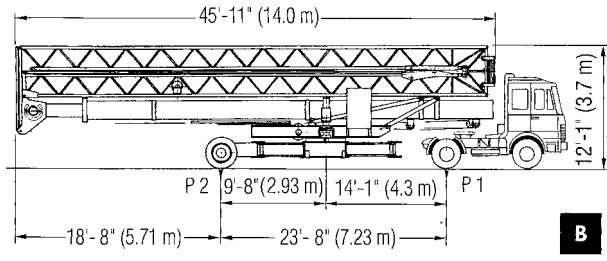
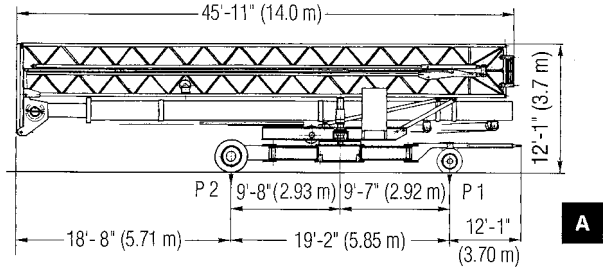
simple, available and cost effective™

COMEDIL CBR 32

Erection Phase



Transport dimensions with braking axles



Width: 8'-2.5" (2.50 m)

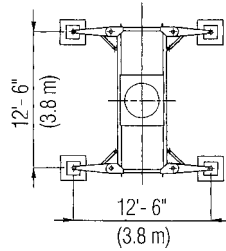
Axle Loads

	A	B
P 1	11,025 lbs. (5000 kg)	8,160 lbs. (3700 kg)
P 2	22,160 lbs. (10 050 kg)	24,250 lbs. (11 000 kg)
P Total	33,180 lbs. (15 050 kg)	32,410 lbs. (14 700 kg)

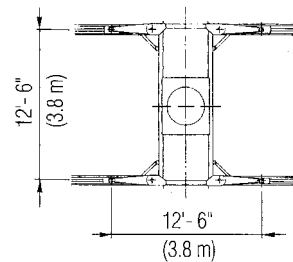
Reactions

	In service	Out of service
R 1	21,700 daN	14,700 daN

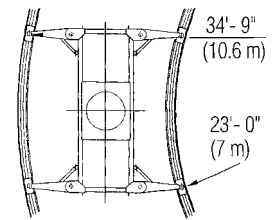
Crane weight without transport axles	29,320 lbs. (13 300 kg)
Ballast weight	48,500 lbs. (22 000 kg)



Jacks version



Straight-track traveling version



Curved-track traveling version

Mechanisms

Hoisting		ft./min (m/min)	lbs. (kg)	HP (kW)
		16.4' (5)	6615 (3000)	3.75 (2.8)
		65.6' (20)	6615 (3000)	15 (11)
		131.2' (40)	3307 (1500)	15 (11)

Three-phase Current	480V (60 Hz)
Required Power	215 HP (16 kW)
Generator Set	Consult factory

Trolley		ft./min (m/min)	65.6/131.2 (20/40)	2-3	1.5-2.2
Slewing		RPM	0.2-1	3.5 daNm	
Travelling		ft./min (m/min)	65.6 (20)	2 x 2	2 x 1.5

We reserve the right to amend these specifications at any time without notice. The only warranty applicable is our standard written warranty applicable to the particular product and sale. We make no other warranty, expressed or implied.

For more information, product demonstration, or details on lease and rental plans, please contact your local Terex Towers Distributor.

TEREX TOWERS

202 Raleigh Street • Wilmington, NC 28412 USA
(910) 395-8500 • FAX: (910) 395-8547