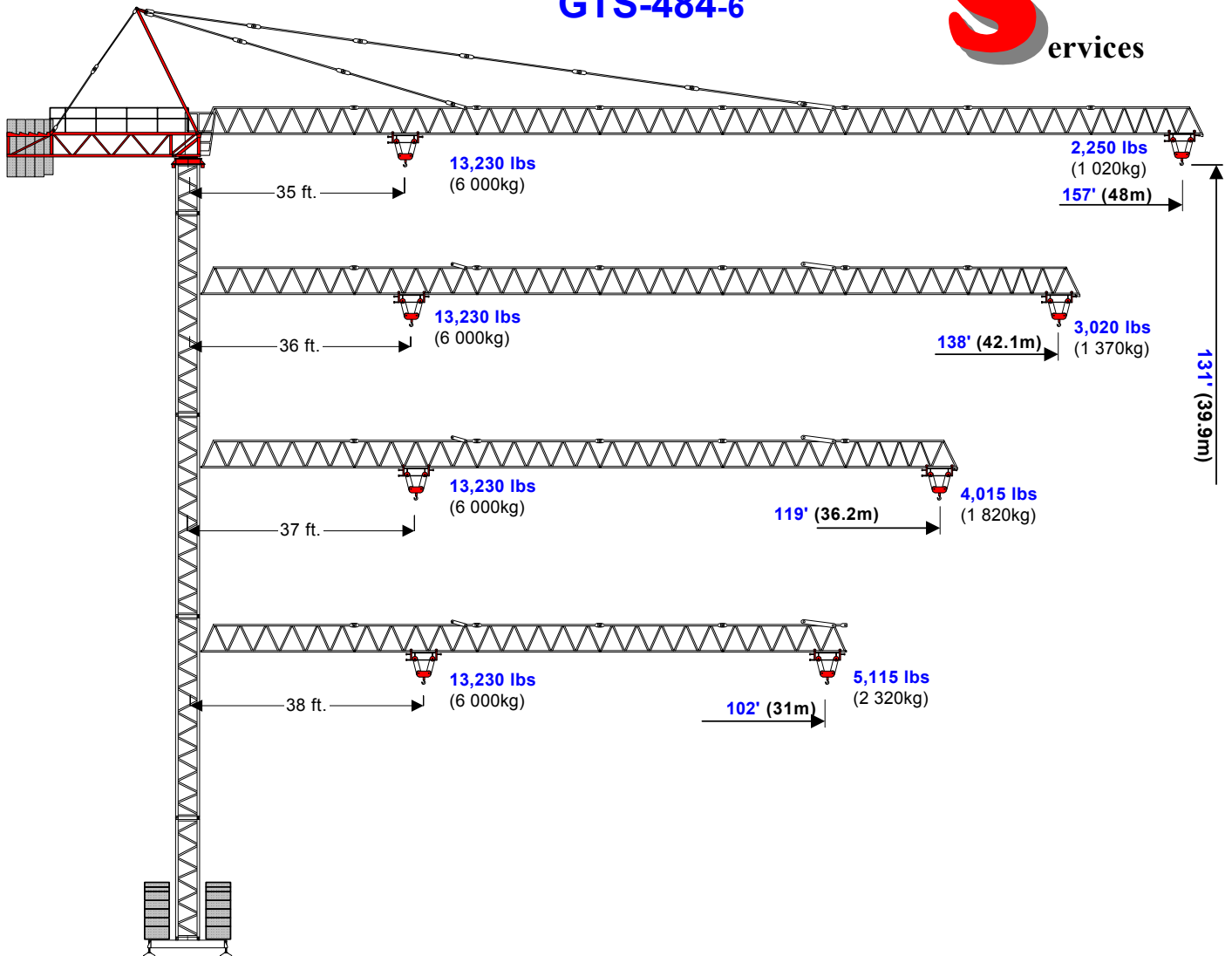


"CITY" Tower Crane

COMEDIL
GTS-484-6



Hook	Ft.	33	39	49	59	69	89	102	108	119	125	138	148	157
Radius	Meters	10	12	15	18	21	27	31	33	36.2	38	42.1	45	48
157'	Lbs	13,230	13,032	10,143	8,225	6,858	5,027	4,212	3,881	3,418	3,175	2,734	2,470	2,249
48m	KG	6,000	5,910	4,600	3,730	3,110	2,280	1,910	1,760	1,550	1,440	1,240	1,120	1,020
138'	Lbs	13,230	13,230	10,893	8,864	7,387	5,446	4,564	4,212	3,726	3,484	3,021		
42.1m	KG	6,000	6,000	4,940	4,020	3,350	2,470	2,070	1,910	1,690	1,580	1,370		
119'	Lbs	13,230	13,230	11,576	9,415	7,872	5,821	4,895	4,520	4,013				
36.2m	KG	6,000	6,000	5,250	4,270	3,570	2,640	2,220	2,050	1,820				
102'	Lbs	13,230	13,230	11,995	9,768	8,181	6,064	5,116						
31m	KG	6,000	6,000	5,440	4,430	3,710	2,750	2,320						

Creative Lifting Services Inc.

Call Will Phone: 303-659-8102 Fax: 303-659-8205
will@creativelifting.com www.creativelifting.com

S12: Tower Component List

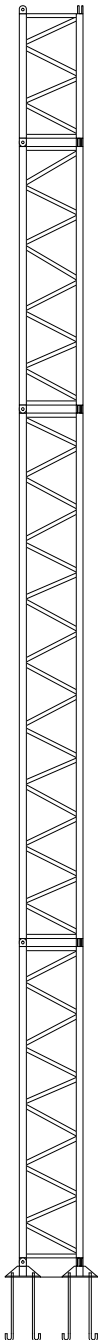
GTS-484

11/13/02

"R" On Bolts S12 Tower					
HUH m	Feet	TA3 6m	TA 10m	TA1 5m	TA2 2.5m
19.1	63	1	1		1
21.6	71	1	1	1	
24.1	79	1	1	1	1
26.6	87	1	2		
29.1	95	1	2		1
31.6	104	1	2	1	
34.1	112	1	2	1	1
36.6	120	1	3		
39.1	128	1	3		1

"F"-Type	S12 Tower, 3.8m Chassis					
HUH	TA3 6m	TA 10m	TA1 5m	TA2 2.5m	Base Ballast	
19.9m (65')	1	1		1	88,000 lbs	
22.4M (73')	1	1	1		88,000 lbs	
24.9m (82')	1	1	1	1	88,000 lbs	
27.4m (90')	1	2			99,000 lbs	
29.9m (98')	1	2		1	99,000 lbs	
32.4m (106')	1	2	1		99,000 lbs	
34.9m (114')	1	2	1	1	121,000 lbs	
37.4m (123')	1	3			132,000 lbs	
39.9m (131')	1	3		1	143,000 lbs	

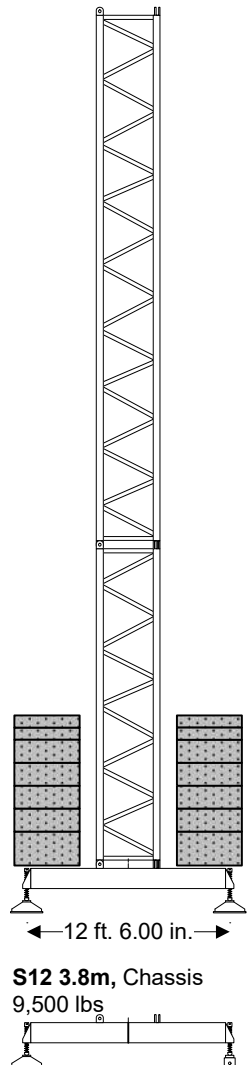
Configuration "R"



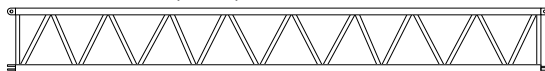
"FP"-Type	3.8m Chassis with Plinths					
HUH	TA3 6m	TA 10m	TA1 5m	TA2 2.5m	Base Ballast	
20.4m (67')	1	1		1	77,000 lbs	
22.9M (75')	1	1	1		77,000 lbs	
25.4m (83')	1	1	1	1	77,000 lbs	
27.9m (92')	1	2			88,000 lbs	
30.4m (100')	1	2		1	88,000 lbs	
32.9m (108')	1	2	1		88,000 lbs	
35.4m (116')	1	2	1	1	99,000 lbs	
37.9m (124')	1	3			110,000 lbs	
40.4m (133')	1	3		1	132,000 lbs	

"T"-Type	S12 Tower, 3.8m Chassis Rail Traveling					
HUH	TA3 6m	TA 10m	TA1 5m	TA2 2.5m	Base Ballast	
20m (66')	1	1		1	88,000 lbs	
22.5M (74')	1	1	1		88,000 lbs	
25m (82')	1	1	1	1	88,000 lbs	
27.5m (90')	1	2			99,000 lbs	
30m (98')	1	2		1	99,000 lbs	
32.5m (107')	1	2	1		99,000 lbs	
35m (115')	1	2	1	1	121,000 lbs	
37.5m (123')	1	3			132,000 lbs	

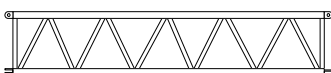
Configuration "F"



S12 TA, 10m (32.8'), 6,100 lbs

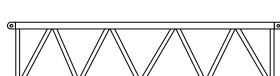


S12 TA3, 6m (19.7'), 3,900 lbs

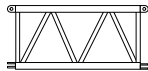


6m (19' 7") TA3
Always at Base with Bolts or Chassis

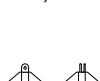
S12 TA1, 5m (16.5'), 3,300 lbs



S12 TA2, 2.5m (8.2'), 1,900 lbs



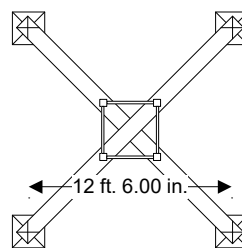
Base Plate Ass.
5' 8" x 5' 8" x 1'2"
1,370 lbs



J Bolts, 42mm x 1300mm
44 lbs Ea.
GTS-511 "R"
To 31.6m (104')
4 per Corner
To 39.1m (128')
6 per Corner



Plinths, 5,500 lbs.
5,500 lbs, 13'8"x3'11"x9"
11,000 lbs, 13'8"x3'11"x17"
16,500 lbs, 13'8"x3'11"x25"



Feet for Chassis "F" Configuration
205 lbs

Feet for Chassis "FP" Configuration
115 lbs

S12 3.8m, Chassis
9,500 lbs

S12 3.8m Rail Bogies Configuration "T"