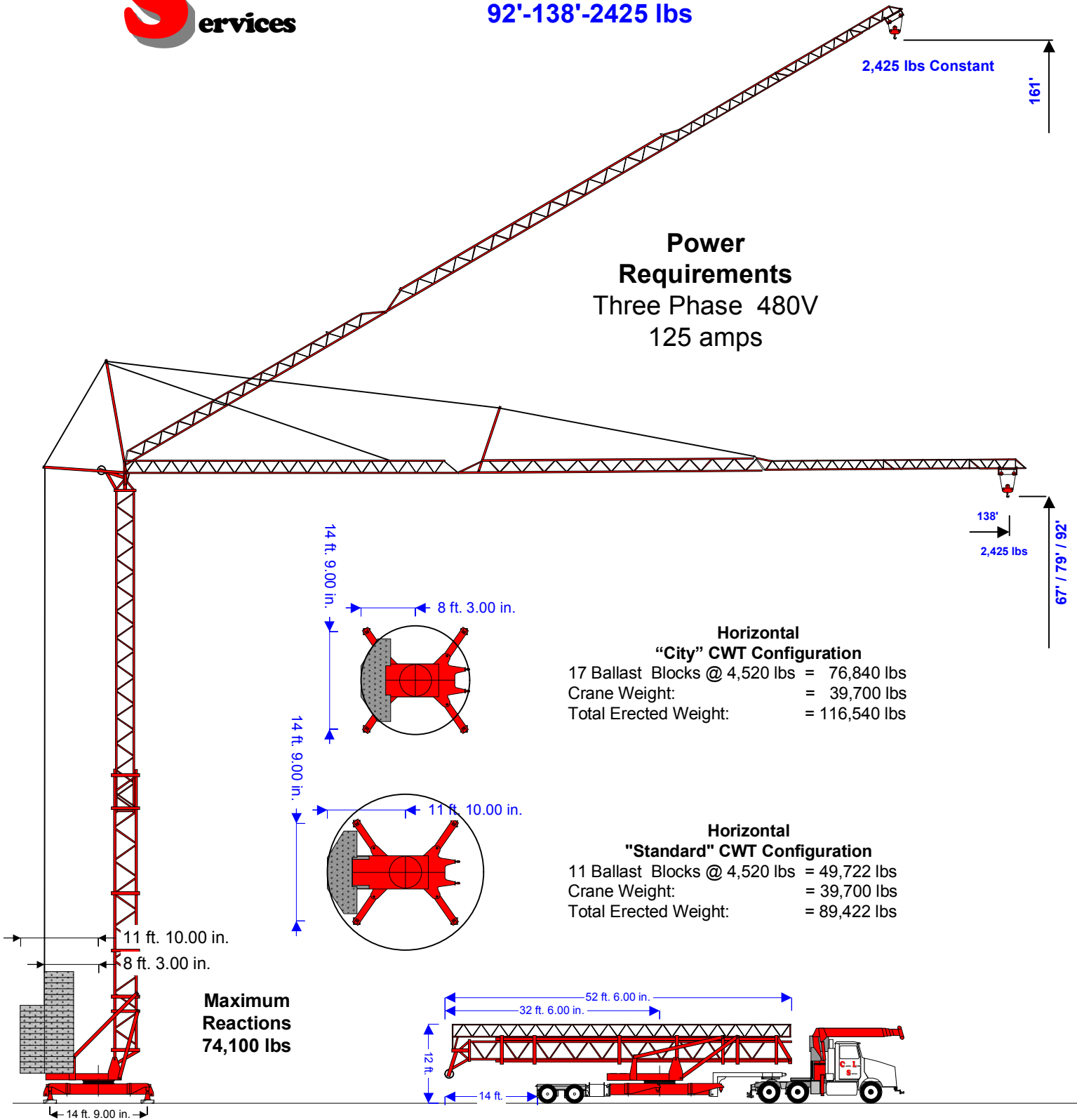


# Peiner Self-Erecting Crane

**SMK-308**

92'-138'-2425 lbs

30 Degree Jib Inclination



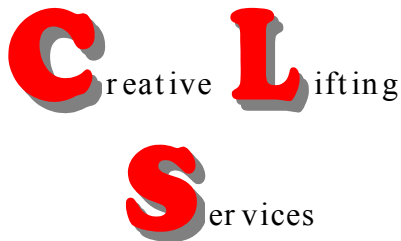
**Power Requirements**  
Three Phase 480V  
125 amps

**Horizontal "City" CWT Configuration**  
17 Ballast Blocks @ 4,520 lbs = 76,840 lbs  
Crane Weight: = 39,700 lbs  
Total Erected Weight: = 116,540 lbs

**Horizontal "Standard" CWT Configuration**  
11 Ballast Blocks @ 4,520 lbs = 49,722 lbs  
Crane Weight: = 39,700 lbs  
Total Erected Weight: = 89,422 lbs

**Maximum Reactions**  
74,100 lbs

**Creative Lifting Services Inc.**



# Peiner Self-Erecting Crane SMK-308

<b>2 Part</b>	<b>Hook</b>	<b>Ft.</b>	<b>51</b>	<b>62</b>	<b>80</b>	<b>98</b>			
<b>Block</b>	<b>Radius</b>	Meters	15.54	18.87	24.25	30			
<b>Jib Length</b>	<b>98'</b>	<b>Lbs</b>	<b>5,513</b>	<b>5,513</b>	<b>5,513</b>	<b>5,182</b>			
	30m	KG	2.500	2.500	2.500	2.350			
<b>2 Part</b>	<b>Hook</b>	<b>Ft.</b>	<b>48</b>	<b>58</b>	<b>74</b>	<b>89</b>	<b>118</b>		
<b>Block</b>	<b>Radius</b>	Meters	14.53	17.62	22.61	27.14	36		
<b>Jib Length</b>	<b>118'</b>	<b>Lbs</b>	<b>5,513</b>	<b>5,513</b>	<b>5,513</b>	<b>5,182</b>	<b>3,859</b>		
	36m	KG	2.500	2.500	2.500	2.350	1.750		
<b>2 Part</b>	<b>Hook</b>	<b>Ft.</b>	<b>43</b>	<b>52</b>	<b>67</b>	<b>83</b>	<b>106</b>	<b>131</b>	
<b>Block</b>	<b>Radius</b>	Meters	13.11	15.86	20.3	25.37	32.2	40	
<b>Jib Length</b>	<b>131'</b>	<b>Lbs</b>	<b>5,513</b>	<b>5,513</b>	<b>5,513</b>	<b>5,182</b>	<b>3,859</b>	<b>2,977</b>	
	40m	KG	2.500	2.500	2.500	2.350	1.750	1.350	
<b>2 Part</b>	<b>Hook</b>	<b>Ft.</b>	<b>39</b>	<b>46</b>	<b>59</b>	<b>73</b>	<b>95</b>	<b>117</b>	<b>138</b>
<b>Block</b>	<b>Radius</b>	Meters	11.77	14.02	18.13	22.33	28.86	35.56	42
<b>Jib Length</b>	<b>138'</b>	<b>Lbs</b>	<b>5,513</b>	<b>5,513</b>	<b>5,513</b>	<b>5,182</b>	<b>3,859</b>	<b>2,977</b>	<b>2,426</b>
	42m	KG	2.500	2.500	2.500	2.350	1.750	1.350	1.100

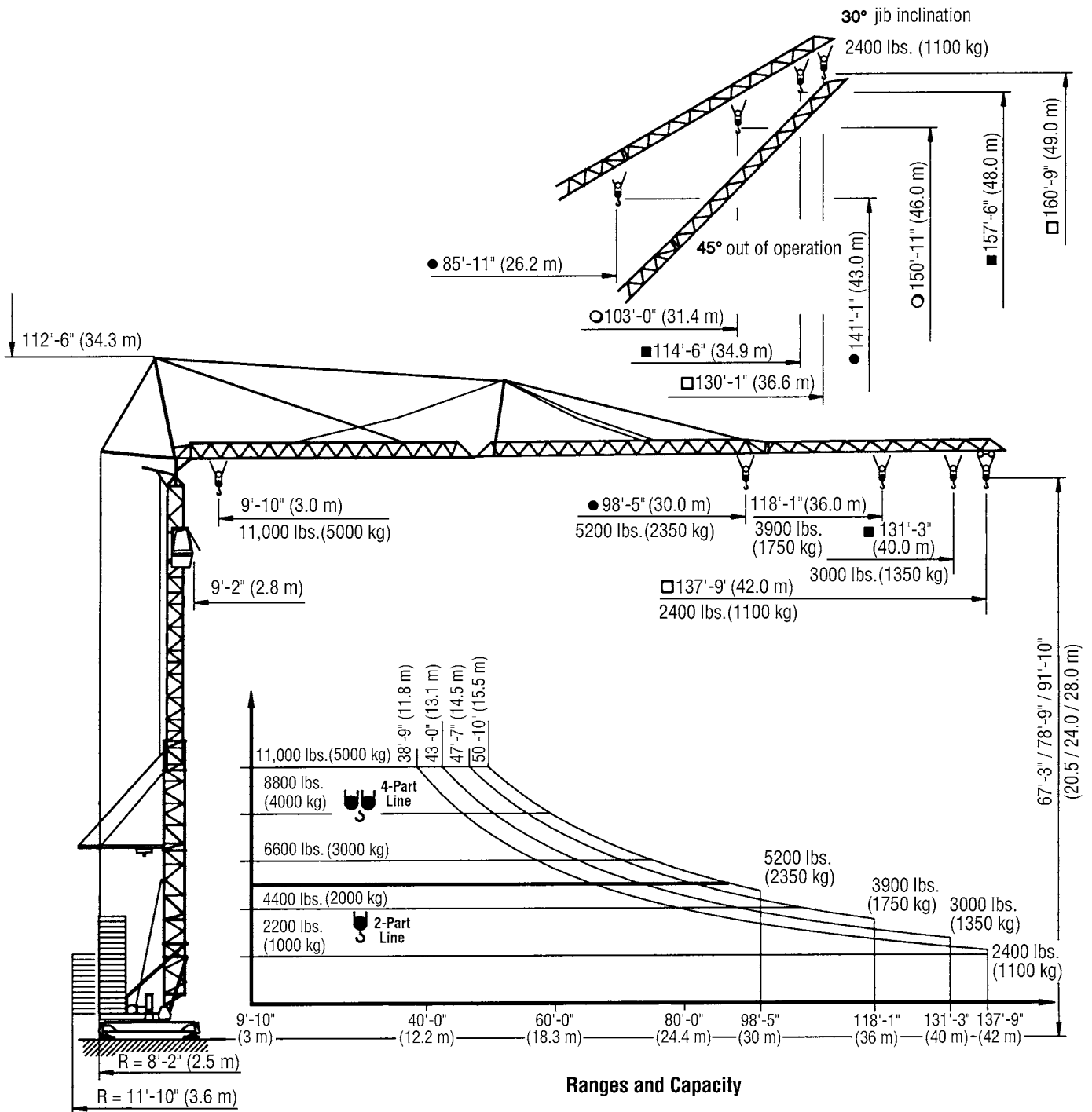
<b>4 Part</b>	<b>Hook</b>	<b>Ft.</b>	<b>51</b>	<b>62</b>	<b>80</b>	<b>98</b>			
<b>Block</b>	<b>Radius</b>	Meters	15.54	18.87	24.25	30			
<b>Jib Length</b>	<b>98'</b>	<b>Lbs</b>	<b>11,025</b>	<b>8,820</b>	<b>6,615</b>	<b>5,182</b>			
	30m	KG	5.000	4.000	3.000	2.350			
<b>4 Part</b>	<b>Hook</b>	<b>Ft.</b>	<b>48</b>	<b>58</b>	<b>74</b>	<b>89</b>	<b>118</b>		
<b>Block</b>	<b>Radius</b>	Meters	14.53	17.62	22.61	27.14	36		
<b>Jib Length</b>	<b>118'</b>	<b>Lbs</b>	<b>11,025</b>	<b>8,820</b>	<b>6,615</b>	<b>5,182</b>	<b>3,859</b>		
	36m	KG	5.000	4.000	3.000	2.350	1.750		
<b>4 Part</b>	<b>Hook</b>	<b>Ft.</b>	<b>43</b>	<b>52</b>	<b>67</b>	<b>83</b>	<b>106</b>	<b>131</b>	
<b>Block</b>	<b>Radius</b>	Meters	13.11	15.86	20.3	25.37	32.2	40	
<b>Jib Length</b>	<b>131'</b>	<b>Lbs</b>	<b>11,025</b>	<b>8,820</b>	<b>6,615</b>	<b>5,182</b>	<b>3,859</b>	<b>2,977</b>	
	40m	KG	5.000	4.000	3.000	2.350	1.750	1.350	
<b>4 Part</b>	<b>Hook</b>	<b>Ft.</b>	<b>39</b>	<b>46</b>	<b>59</b>	<b>73</b>	<b>95</b>	<b>117</b>	<b>138</b>
<b>Block</b>	<b>Radius</b>	Meters	11.77	14.02	18.13	22.33	28.86	35.56	42
<b>Jib Length</b>	<b>138'</b>	<b>Lbs</b>	<b>11,025</b>	<b>8,820</b>	<b>6,615</b>	<b>5,182</b>	<b>3,859</b>	<b>2,977</b>	<b>2,426</b>
	42m	KG	5.000	4.000	3.000	2.350	1.750	1.350	1.100



# PEINER SMK 308

Self-Erecting Tower Crane  
11,000 lbs. (5000 kg)  
Lifting Capacity

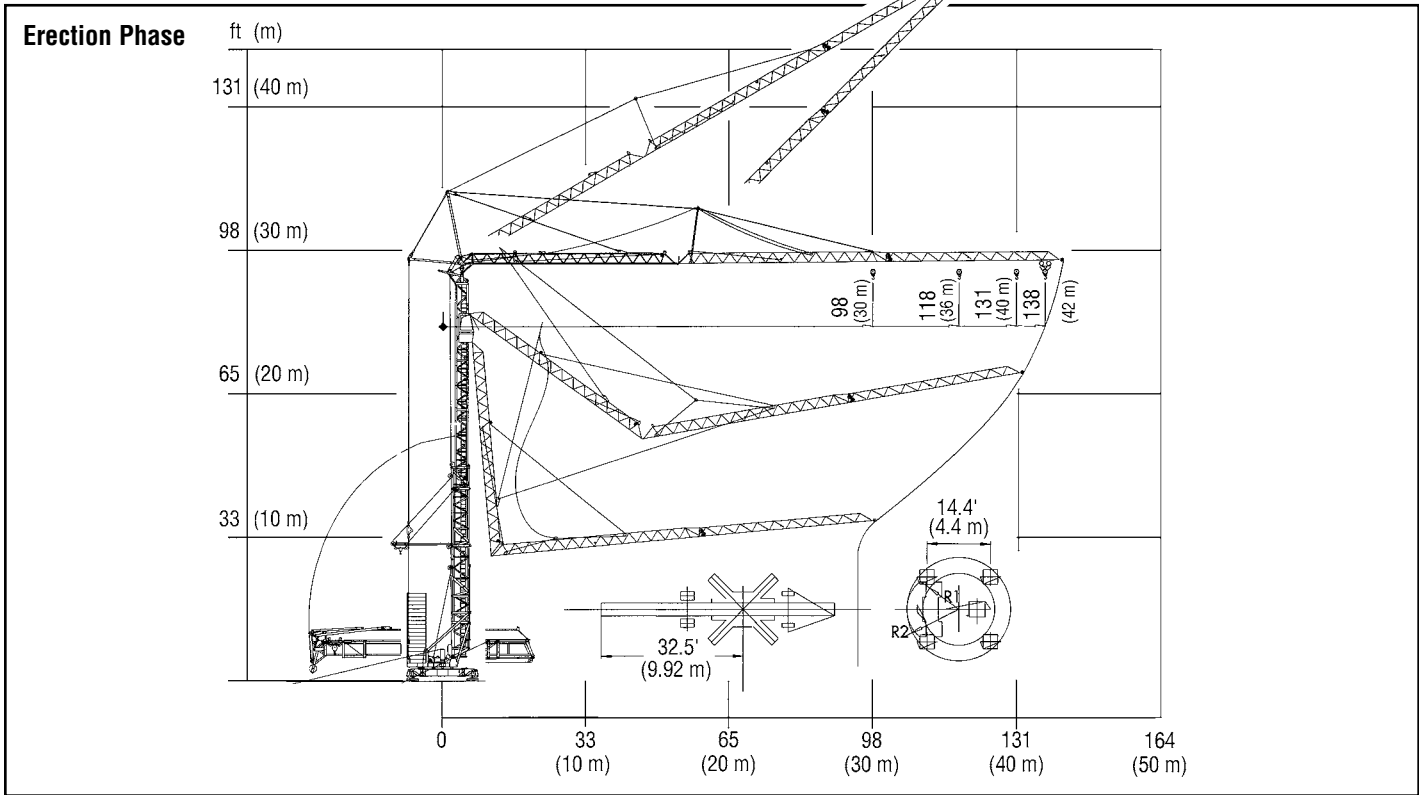
## SPECIFICATIONS



Machines shown may have optional equipment.

simple, available and cost effective™

# PEINER SMK 308



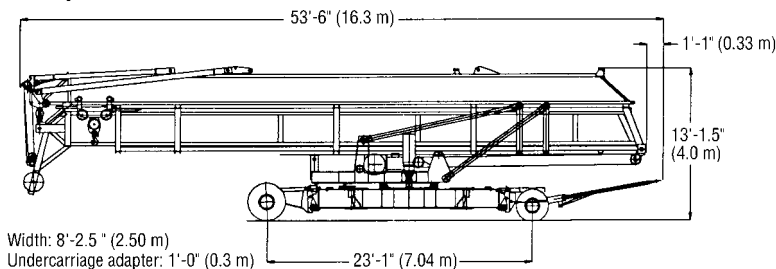
## Speeds

Type	Icon	2-Part Line		4-Part Line		480 V / 60 Hz / 3 ph			
		ft./min m/min	lbs. (kg)	ft./min m/min	lbs. (kg)	Jib-inclination 30°	Power HP (kW)		
PU 15-25/3	Icon	205 (62.5)	3300 (1500)	102 (31.0 m)	6600 (3000)	2-Part Line	205 (62.5)	2400 (1100)	24.1 (18)
		102 (31.0)	5500 (2500)	51 (15.5 m)	11000 (5000)		102 (31.0)		
		24 (7.3)		12 (3.65)			24 (7.3)		
PU S4-50/2	Icon	v= 177/87 fpm (jib-inclination 30°; v= 87 fpm; 2400 lbs) (54/27 m/min)						6.4 (4.8)	
K 2-55/1	Icon	v= 98 fpm (30 m/min)						2 x 3.5 (2.6)	
K WB 80/3	Icon	n= 0 → 1.02 rpm						7.7 (5.7)	

## Weights and Sizes

	Standard R= 11'-10" (3.6 m)	City Version R= 8'-2" (2.5 m)
Construction weight	39,700 lbs. (18 000 kg)	
Counterweight	54,200 lbs. (24 600 kg)	81,300 (36 900 kg)
Central ballast (at 30° or 45°)	11,000 lbs. (5000 kg)	
Max. wheel load	70,000 lbs. (31 700 kg)	74,000 lbs. (33 600 kg)
Track gauge/ wheel gauge	14'-9" x 14'-5" (4.5 m x 4.4 m)	
Height of sight from cab	83'-8" (25.5 m) 70'-6" (21.5 m) 59'-1" (18.0 m)	
Cable winder (length of track)	236'-3" (72.0 m)	
Cable cross section	AWG 6	
Rail	S 41/ S 49	
Internal curve radius rail undercarriage curve going	27'-11" (8.5 m)	

## Transport dimensions



Width: 8'-2.5" (2.5 m)

Undercarriage adapter: 1'-0" (0.3 m)

For more information, product demonstration, or details on lease and rental plans, please contact your local Terex Towers Distributor.

We reserve the right to amend these specifications at any time without notice. The only warranty applicable is our standard written warranty applicable to the particular product and sale. We make no other warranty, expressed or implied.

# TEREX TOWERS

202 Raleigh Street  
Wilmington, NC 28412 USA  
(910) 395-8500 • FAX: (910) 395-8547  
E-mail: wilmington@terexlifting.com

[www.terexlift.com](http://www.terexlift.com)