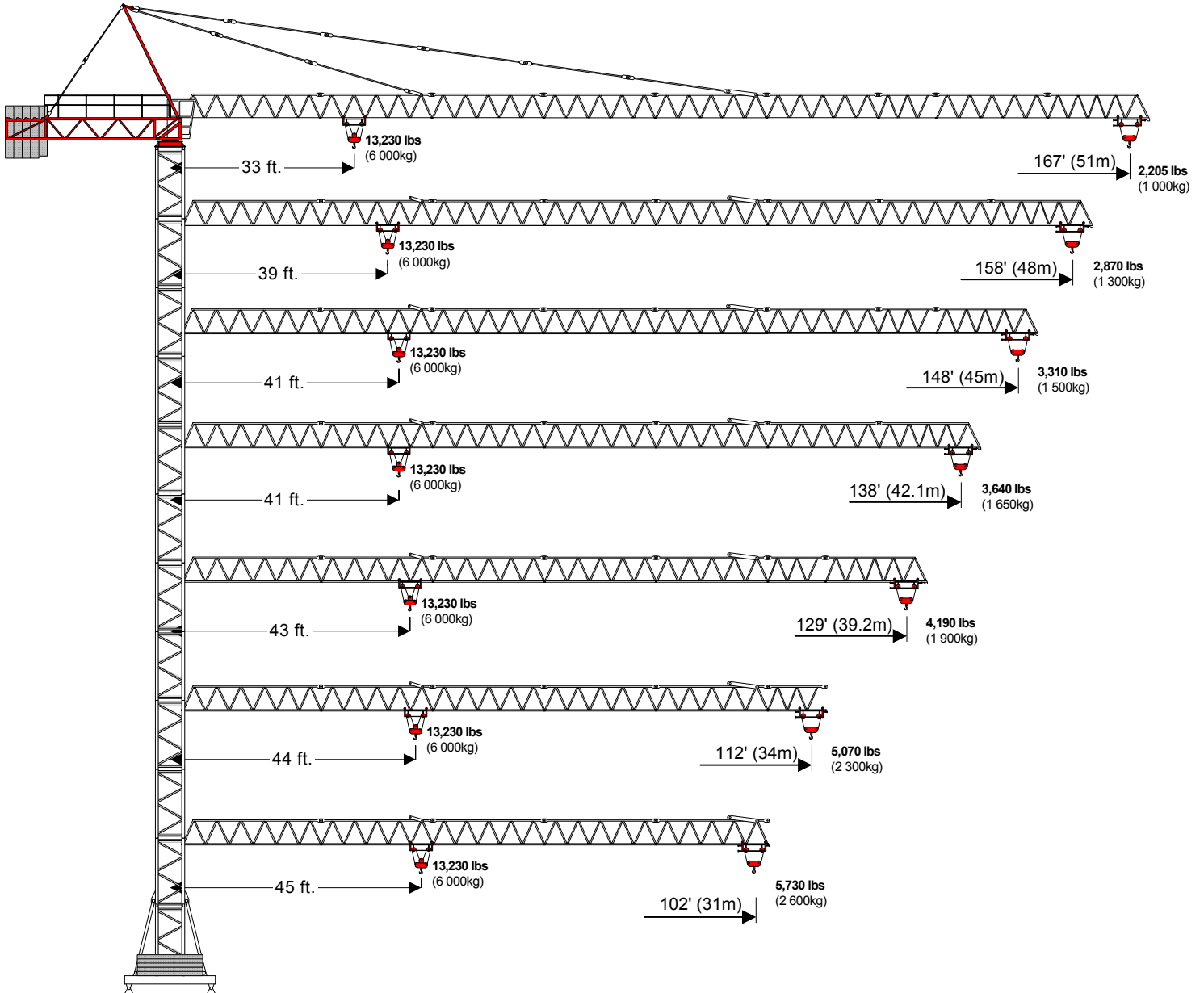


COMEDIL

"CITY" Tower Crane GTS-511A-6



Creative Lifting Services Inc.

Call Will Phone: 303-659-8102 Fax: 303-659-8205

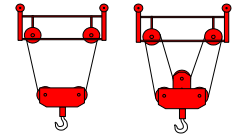
will@creativelifting.com www.creativelifting.com

GTS-511A-6

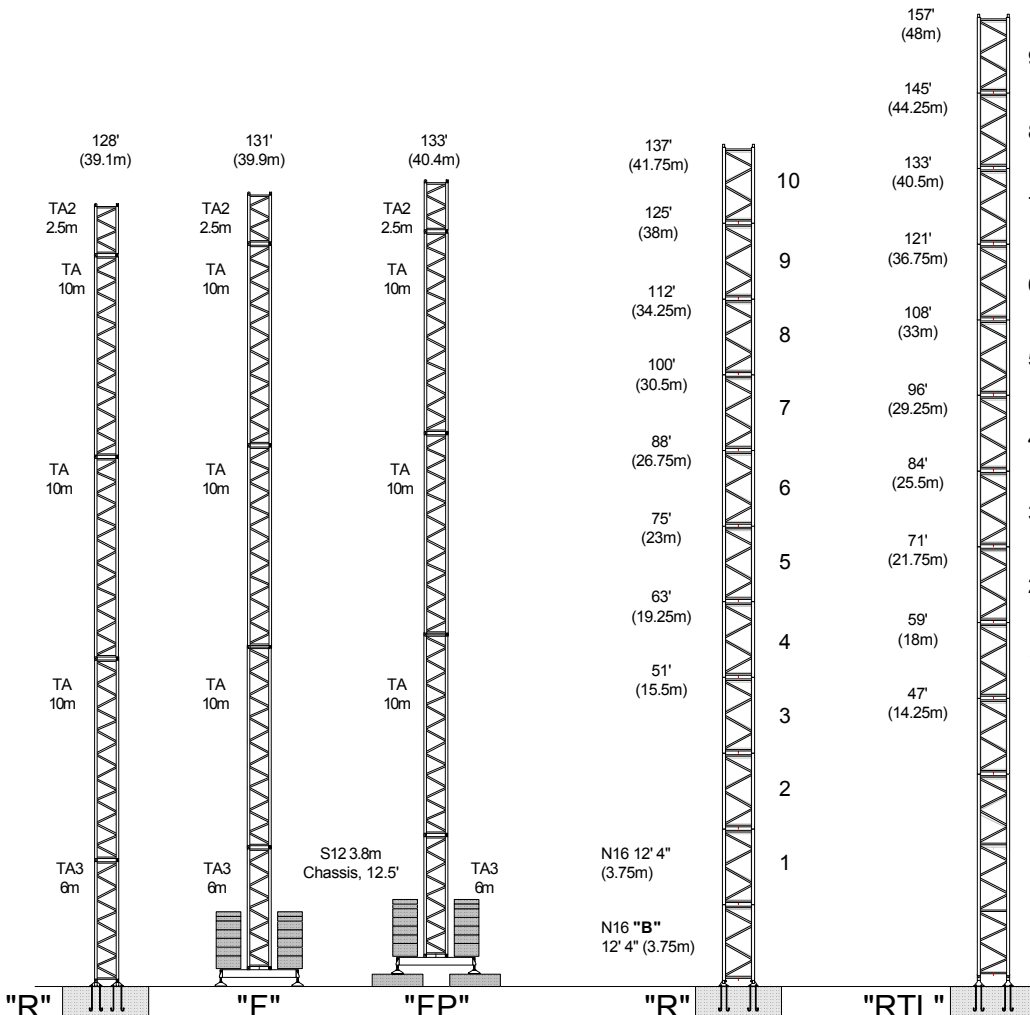
Hook	Ft.	33	43	49	59	66	75	82	92	102	112	118	129	138	148	157	167
Radius	Meters	10	13	15	18	20	23	25	28	31	34	36	39.2	42.1	45.1	48	51
167'	Lbs	6,615	6,615	6,615	6,615	6,615	5,865	5,336	4,675	4,145	3,704	3,462	3,109	2,844	2,602	2,403	2,205
51m	KG	3.000	3.000	3.000	3.000	3.000	2.660	2.420	2.120	1.880	1.680	1.570	1.410	1.290	1.180	1.090	1.000
167'	Lbs	13,230	10,161	8,626	6,963	6,134	5,157	4,637	3,998	3,479	3,054	2,809	2,470	2,207	1,971	1,771	1,588
51m	KG	6.000	4.608	3.912	3.158	2.782	2.339	2.103	1.813	1.578	1.385	1.274	1.120	1.001	0.894	0.803	0.720
157'	Lbs	6,615	6,615	6,615	6,615	6,615	6,615	6,240	5,490	4,873	4,366	4,079	3,682	3,374	3,109	2,867	
48m	KG	3.000	3.000	3.000	3.000	3.000	3.000	2.830	2.490	2.210	1.980	1.850	1.670	1.530	1.410	1.300	
157'	Lbs	13,230	11,925	10,156	8,240	7,281	6,156	5,557	4,816	4,220	3,729	3,446	3,056	2,752	2,481	2,249	
48m	KG	6.000	5.408	4.606	3.737	3.302	2.792	2.520	2.184	1.914	1.691	1.563	1.386	1.248	1.125	1.020	
148'	Lbs	6,615	6,615	6,615	6,615	6,615	6,615	6,615	5,821	5,182	4,653	4,344	3,925	3,594	3,308		
45.1m	KG	3.000	3.000	3.000	3.000	3.000	3.000	3.000	2.640	2.350	2.110	1.970	1.780	1.630	1.500		
148'	Lbs	13,230	12,654	10,787	8,765	7,755	6,566	5,934	5,155	4,525	4,006	3,711	3,296	2,977	2,690		
45.1m	KG	6.000	5.739	4.892	3.975	3.517	2.978	2.691	2.338	2.052	1.817	1.683	1.495	1.350	1.220		
138'	Lbs	6,615	6,615	6,615	6,615	6,615	6,615	6,615	5,865	5,226	4,697	4,388	3,969	3,638			
42.1m	KG	3.000	3.000	3.000	3.000	3.000	3.000	3.000	2.660	2.370	2.130	1.990	1.800	1.650			
138'	Lbs	13,230	12,793	10,908	2,251	7,845	6,646	6,006	5,219	4,586	4,057	3,771	3,352	3,021			
42.1m	KG	6.000	5.802	4.947	1.021	3.558	3.014	2.724	2.367	2.080	1.840	1.710	1.520	1.370			
129'	Lbs	6,615	6,615	6,615	6,615	6,615	6,615	6,615	6,174	5,513	4,961	4,631	4,190				
39.2m	KG	3.000	3.000	3.000	3.000	3.000	3.000	3.000	2.800	2.500	2.250	2.100	1.900				
129'	Lbs	13,230	13,230	11,506	9,362	8,293	7,036	6,366	5,539	4,873	4,324	4,009	3,572				
39.2m	KG	6.000	6.000	5.218	4.246	3.761	3.191	2.887	2.512	2.210	1.961	1.818	1.620				
112'	Lbs	6,615	6,615	6,615	6,615	6,615	6,615	6,615	6,328	5,645	5,072						
34m	KG	3.000	3.000	3.000	3.000	3.000	3.000	3.000	2.870	2.560	2.300						
112'	Lbs	13,230	13,230	11,821	9,609	8,514	7,228	6,542	5,698	5,016	4,454						
34m	KG	6.000	6.000	5.361	4.358	3.861	3.278	2.967	2.584	2.275	2.020						
102'	Lbs	6,615	6,615	6,615	6,615	6,615	6,615	6,615	6,439	5,733							
31m	KG	3.000	3.000	3.000	3.000	3.000	3.000	3.000	2.920	2.600							
102'	Lbs	13,230	13,230	12,006	9,781	8,670	7,362	6,666	5,808	5,116							
31m	KG	6.000	6.000	5.445	4.436	3.932	3.339	3.023	2.634	2.320							

6 Ton Version

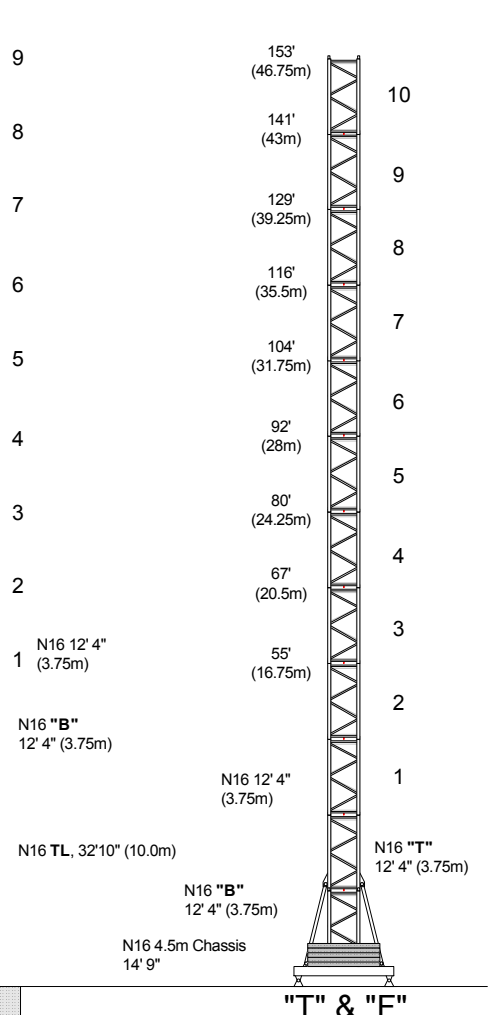
2 Part & 4 Part Blocks



S12 Tower



N16 Tower



S12: Tower Component List

03/17/13

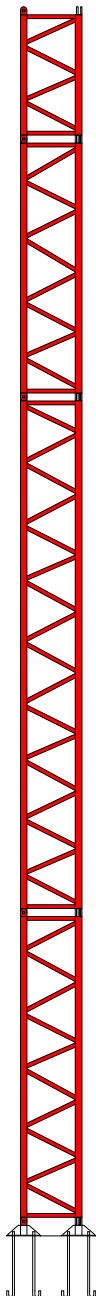
GTS-484, 511 & 511A

"R" On Bolts S12 Tower						"F"-Type S12 Tower, 3.8m Chassis					
HUH m	Feet	TA3 6m	TA 10m	TA1 5m	TA2 2.5m	HUH	TA3 6m	TA 10m	TA1 5m	TA2 2.5m	Base Ballast
19.1	63	1	1		1	19.9m (65')	1	1		1	88,000 lbs
21.6	71	1	1	1		22.4m (73')	1	1	1		88,000 lbs
24.1	79	1	1	1	1	24.9m (82')	1	1	1	1	88,000 lbs
26.6	87	1	2			27.4m (90')	1	2			99,000 lbs
29.1	95	1	2		1	29.9m (98')	1	2		1	99,000 lbs
31.6	104	1	2	1		32.4m (106')	1	2	1		99,000 lbs
34.1	112	1	2	1	1	34.9m (114')	1	2	1	1	121,000 lbs
36.6	120	1	2	1	2	37.4m (123')	1	2	1	2	132,000 lbs
39.1	128	1	2	1	3	39.9m (131')	1	2	1	3	143,000 lbs

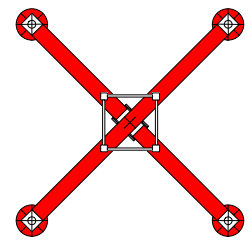
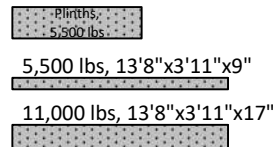
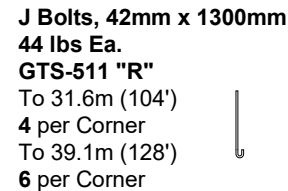
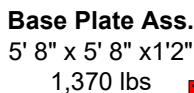
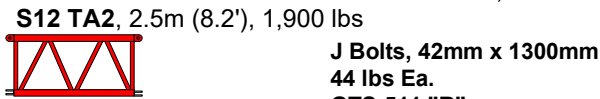
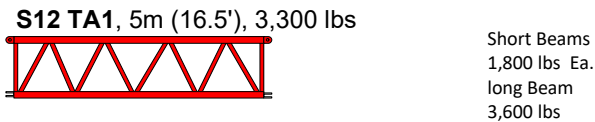
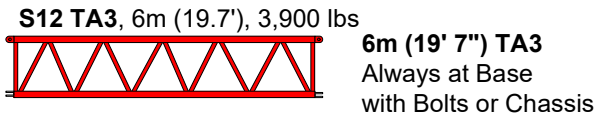
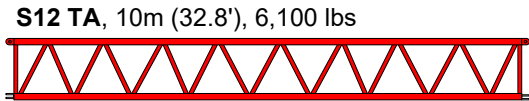
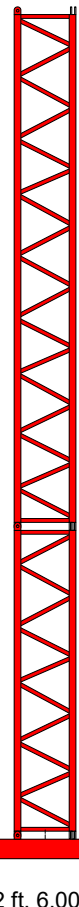
"FP"-Type	3.8m Chassis with Plinths				Base Ballast
HUH	TA3 6m	TA 10m	TA1 5m	TA2 2.5m	
20.4m (67')	1	1		1	77,000 lbs
22.9m (75')	1	1	1		77,000 lbs
25.4m (83')	1	1	1	1	77,000 lbs
27.9m (92')	1	2			88,000 lbs
30.4m (100')	1	2		1	88,000 lbs
32.9m (108')	1	2	1		88,000 lbs
35.4m (116')	1	2	1	1	99,000 lbs
37.9m (124')	1	2	1	2	110,000 lbs
40.4m (133')	1	2	1	3	132,000 lbs

"T"-Type	S12 Tower, 3.8m Chassis Rail Traveling				Base Ballast
HUH	TA3 6m	TA 10m	TA1 5m	TA2 2.5m	
20m (66')	1	1		1	88,000 lbs
22.5m (74')	1	1	1		88,000 lbs
25m (82')	1	1	1	1	88,000 lbs
27.5m (90')	1	2			99,000 lbs
30m (98')	1	2		1	99,000 lbs
32.5m (107')	1	2	1		99,000 lbs
35m (115')	1	2	1	1	121,000 lbs
37.5m (123')	1	2	1	2	132,000 lbs
40m (131')	1	2	1	3	132,000 lbs

Configuration "R"

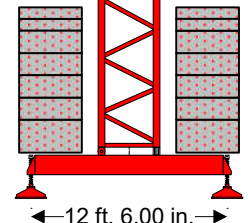


Configuration "F"



Feet for Chassis "F" Configuration
205 lbs

Feet for Chassis "FP" Configuration
115 lbs

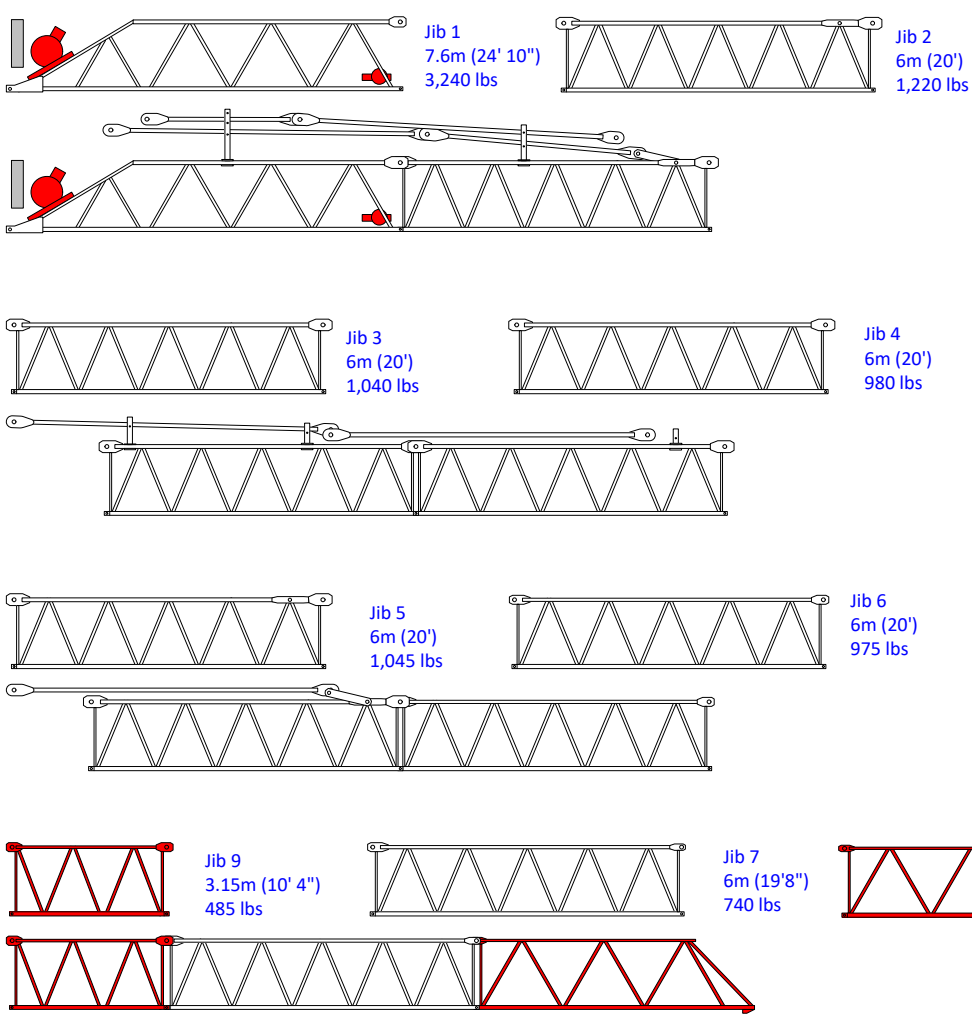
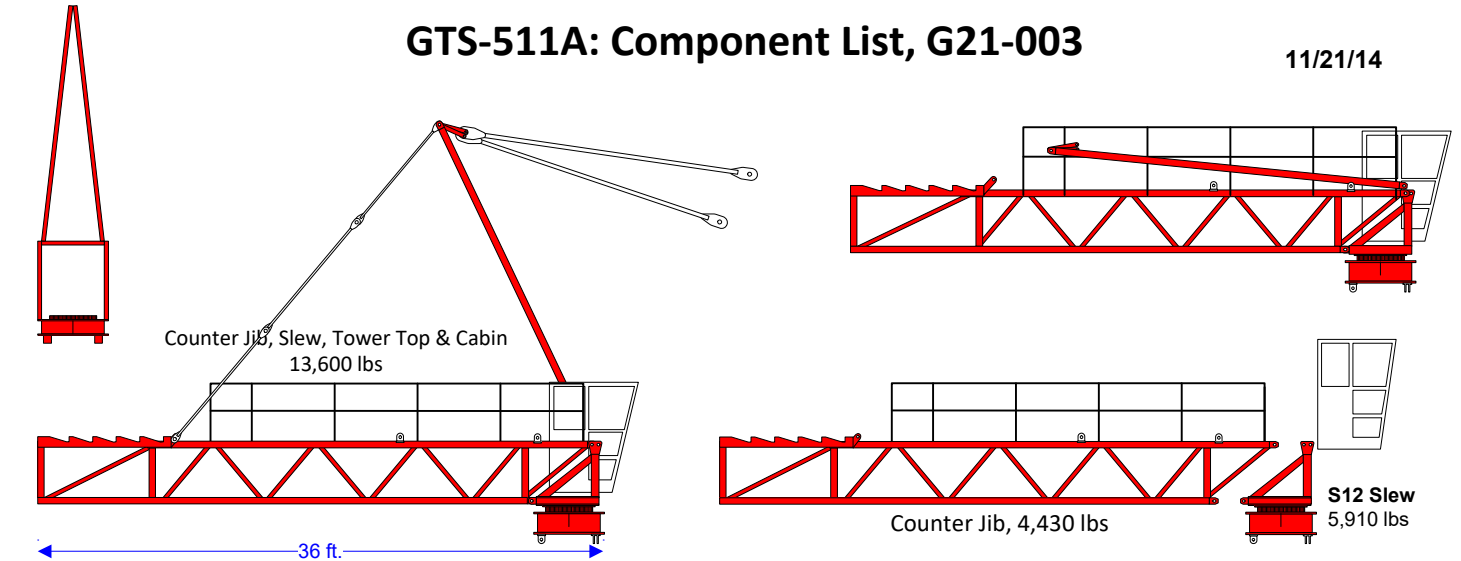


S12 3.8m, Chassis
8,100 lbs

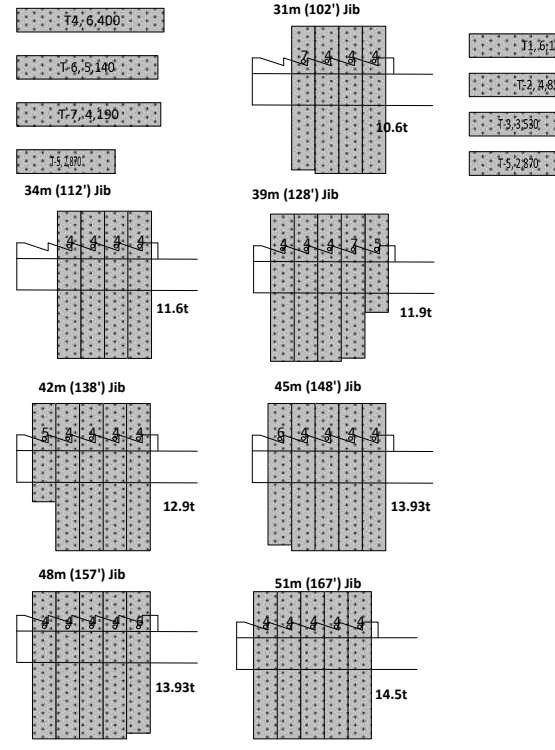
S12 3.8m Rail Bogies Configuration "T"

GTS-511A: Component List, G21-003

11/21/14



GTS-511A CJ Ballast G21-004, G21-005



31m (102')	Jib = 1,2,3,4,5, Jib Toe	13,205 lbs Complete
34m (112')	Jib = 1,2,3,4,5,9, Jib Toe	13,690 lbs Complete
39.2m (129')	Jib = 1,2,3,4,5,9,8	14,145 lbs Complete
42.1m (138')	Jib = 1,2,3,4,5,6,8	14,635 lbs Complete
45.1m (148')	Jib = 1,2,3,4,5,6,9,8	15,120 lbs Complete
48m (158')	Jib = 1,2,3,4,5,6,7,8	15,375 lbs Complete
51m (167')	Jib = 1,2,3,4,5,6,9,7,8	15,860 lbs Complete

