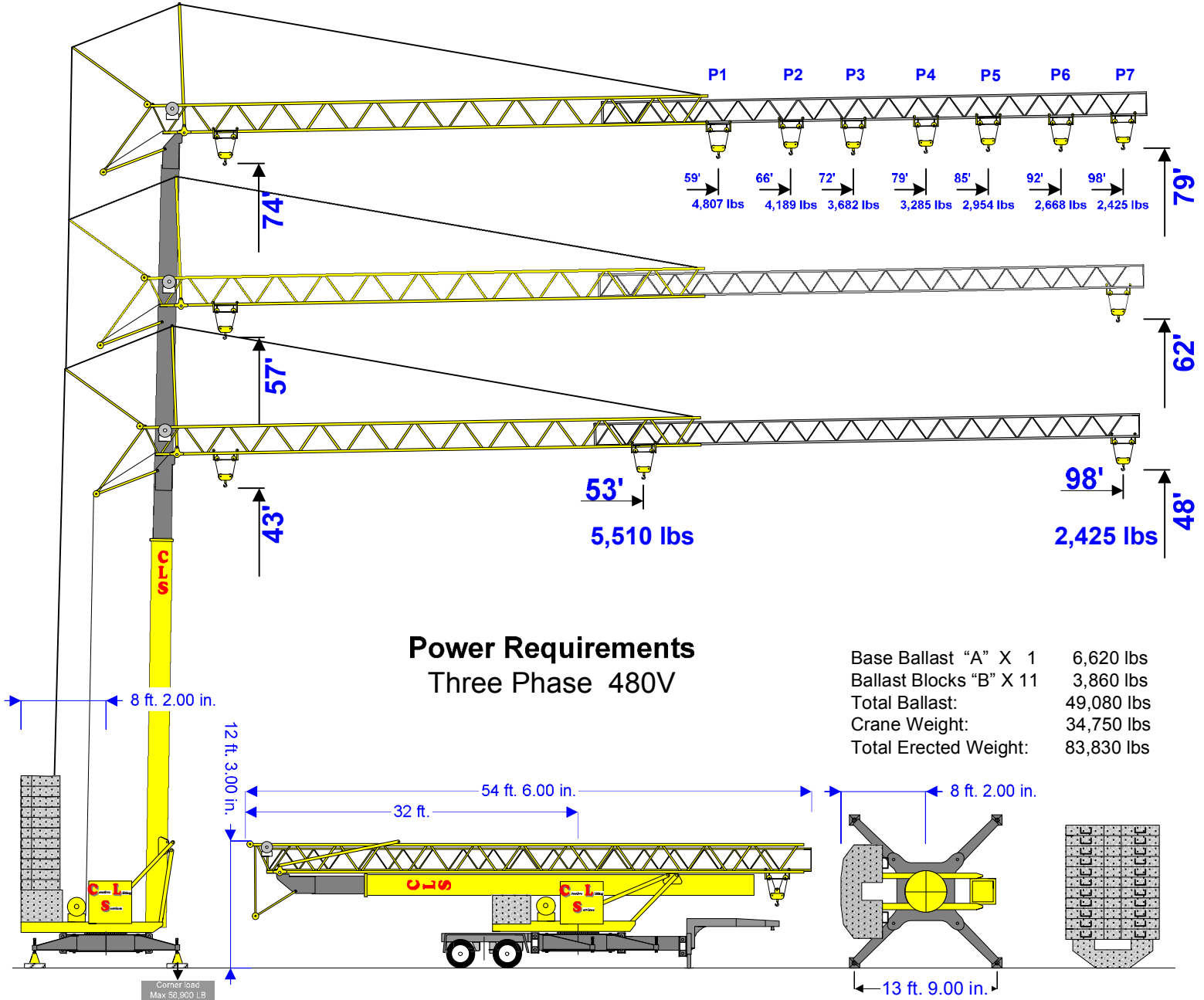


32-TT

79' - 98' - 2,425 lbs



Power Requirements Three Phase 480V

Base Ballast "A" X 1	6,620 lbs
Ballast Blocks "B" X 11	3,860 lbs
Total Ballast:	49,080 lbs
Crane Weight:	34,750 lbs
Total Erected Weight:	83,830 lbs

Hook	ft.	52	56	59	62	66	69	72	75	79	82	85	89	92	95	98
Radius	meters	16	17	18.0	19.0	20.0	21.0	22.0	23.0	24.0	25.0	26.0	27.0	28.0	29.0	30.0
Maximum Capacities	lbs.	5,513	5,204	4,807	4,476	4,190	3,925	3,682	3,462	3,285	3,109	2,955	2,800	2,668	2,536	2,426
	tonnes	2.50	2.36	2.18	2.03	1.90	1.78	1.67	1.57	1.49	1.41	1.34	1.27	1.21	1.15	1.10

Creative Lifting Services Inc.

Call Kelly or Will Phone: 303-659-8102 Fax: 303-659-5314

kelly@creativelifting.com will@creativelifting.com www.creativelifting.com