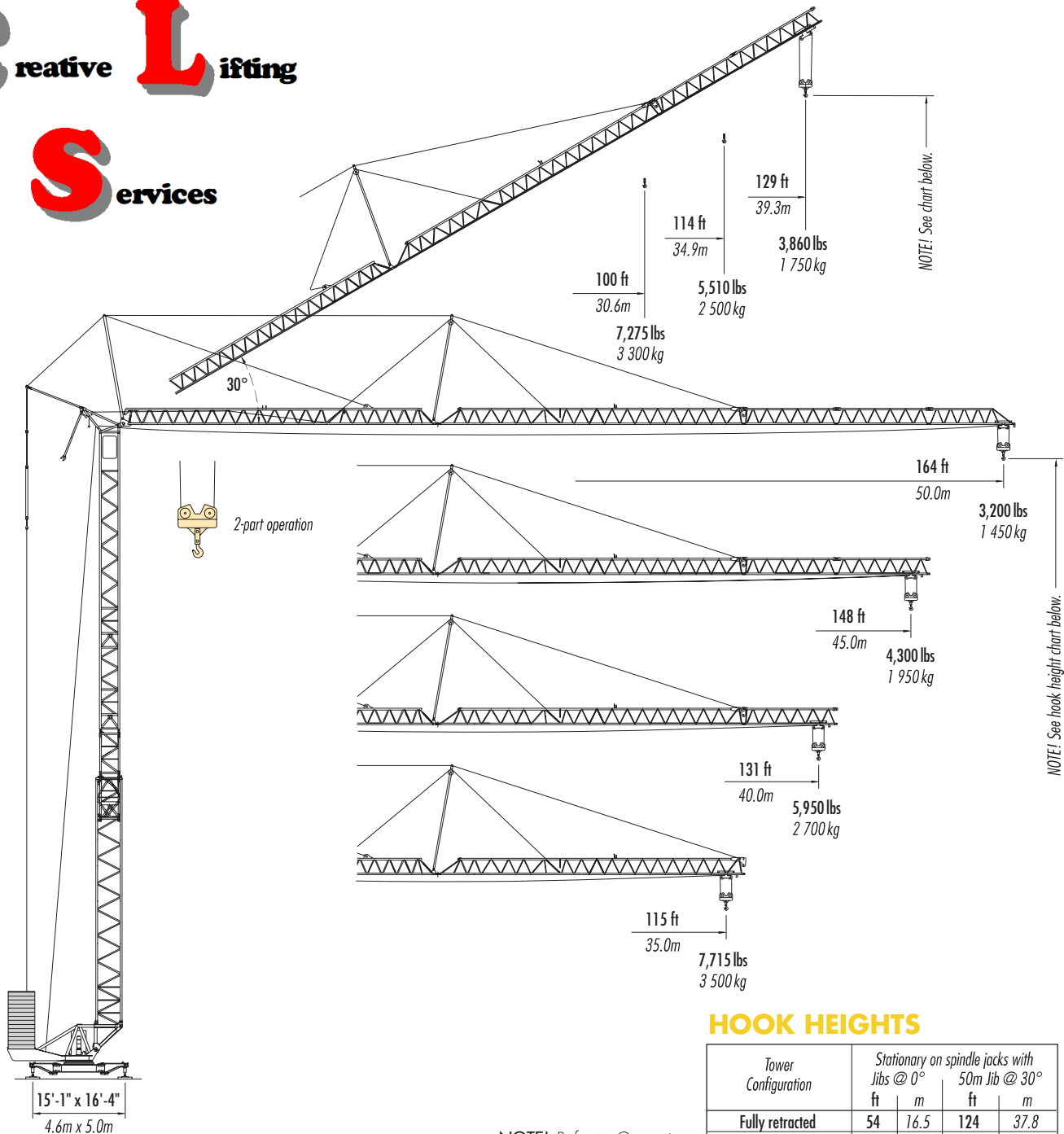


LIEBHERR 120 K

SELF-ERECTING CRANE

Creative **L**ifting
Services



HOOK HEIGHTS

Tower Configuration	Stationary on spindle jacks with Jibs @			
	0°		50m Jib @ 30°	
	ft	m	ft	m
Fully retracted	54	16.5	124	37.8
Intermediate position	80	24.4	150	45.7
Fully extended	95	29.0	165	50.3
Fully extended + 1 STS	103	31.4	173	52.7
Fully extended + 2 STS	111	33.8	181	55.1

NOTE! Refer to Operation Manual or contact Morrow Equipment for additional information.

STATIONARY

on outriggers with spindle jacks
maximum hook height: 181 ft (55.1m)

Creative Lifting Services Inc.

Call Will or Kelly Phone: 303-659-8102

Fax: 303-659-5314

will@creativelifting.com

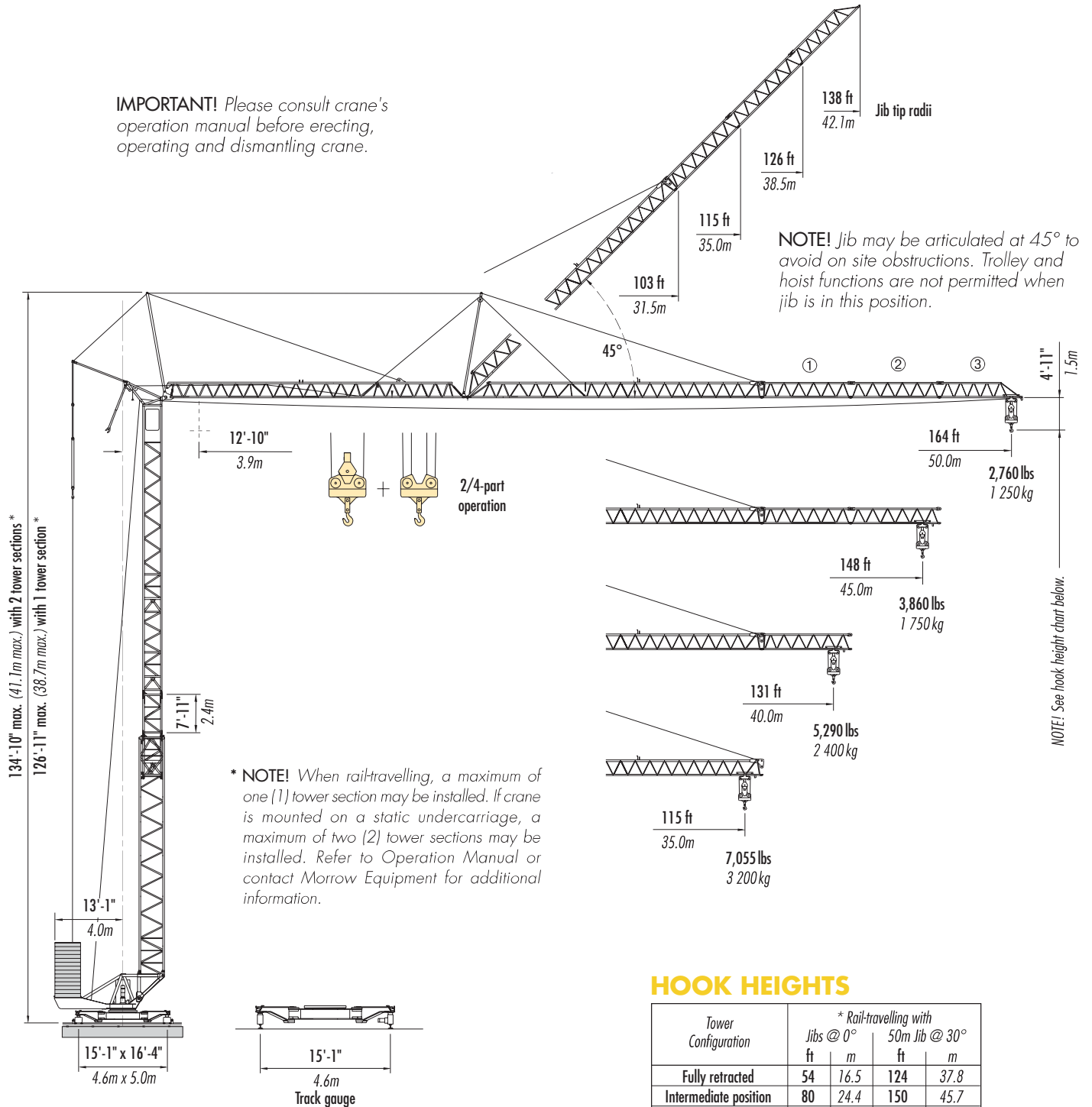
kelly@creativelifting.com

www.creativelifting.com

Configurations

LIEBHERR 120 K

IMPORTANT! Please consult crane's operation manual before erecting, operating and dismantling crane.



NOTE! Jib may be articulated at 45° to avoid on site obstructions. Trolley and hoist functions are not permitted when jib is in this position.

NOTE! See hook height chart below.

HOOK HEIGHTS

Tower Configuration	* Rail-travelling with			
	Jibs @ 0°		50m Jib @ 30°	
	ft	m	ft	m
Fully retracted	54	16.5	124	37.8
Intermediate position	80	24.4	150	45.7
Fully extended	95	29.0	165	50.3
Fully extended + 1 STS	103	31.4	173	52.7

NOTE! Refer to Operation Manual or contact Morrow Equipment for additional information.

TRAVELLING


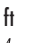
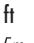
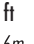
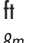
on outriggers with rail bogies

[weight without tower sections:
approximately 62,390 lbs (28,300 kg)]


Radius & capacities

LIEBHERR 120 K

2-Part Line

Hook Radius	Maximum Capacity – Radius		ft	72	85	98	105	108	115	118	121	125	131	135	138	141	148	151	157	164	
			m	22.0	26.0	30.0	32.0	33.0	35.0	36.0	37.0	38.0	40.0	41.0	42.0	43.0	45.0	46.0	48.0	50.0	
164 ft 50.0m	8,820 lbs – 64 ft 4 000 kg – 19.4m		lbs kg	7,540 3 420	6,129 2 780	5,137 2 330	4,740 2 150	4,542 2 060	4,233 1 920	4,079 1 850	3,924 1 780	3,792 1 720	3,571 1 620	3,439 1 560	3,329 1 510	3,241 1 470	3,200 1 450	3,200 1 450	3,200 1 450	3,200 1 450	
148 ft 45.0m	8,820 lbs – 74 ft 4 000 kg – 22.5m		lbs kg	8,820 4 000	7,385 3 350	6,217 2 820	5,732 2 600	5,534 2 510	5,181 2 350	4,960 2 250	4,806 2 180	4,630 2 100	4,343 1 970	4,300 1 950	4,300 1 950	4,300 1 950	4,300 1 950				
131 ft 40.0m	8,820 lbs – 87 ft 4 000 kg – 26.6m		lbs kg	8,820 4 000	8,820 4 000	7,628 3 460	7,077 3 210	6,812 3 090	6,349 2 880	6,129 2 780	5,950 2 700	5,950 2 700	5,950 2 700								
115 ft 35.0m	8,820 lbs – 98 ft 4 000 kg – 29.8m		lbs kg	8,820 4 000	8,820 4 000	8,730 3 960	8,091 3 670	7,715 3 500	7,715 3 500												

2-Part Line with jib @ 30°

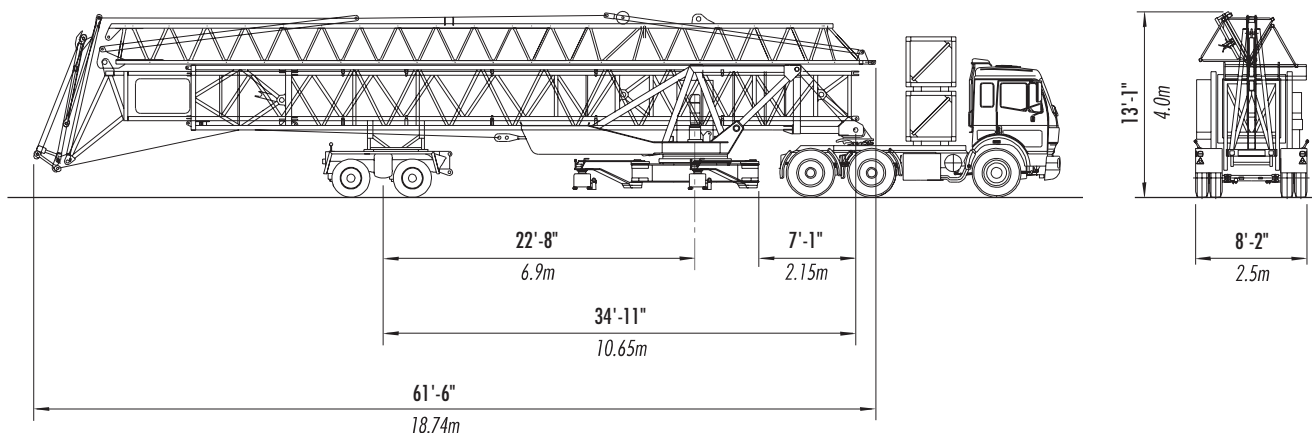
Hook Radius	Maximum Capacity – Radius		ft	69	75	82	89	95	100	102	105	108	112	114	115	118	121	125	128	129	
			m	21.0	23.0	25.0	27.0	29.0	30.6	31.0	32.0	33.0	34.0	34.9	35.0	36.0	37.0	38.0	39.0	39.3	

Creative Lifting Services Inc.

Call Will or Kelly Phone: 303-659-8102 Fax: 303-659-5314

will@creativelifting.com kelly@creativelifting.com www.creativelifting.com

NOTE: Refer to Operation Manual or contact Morrow Equipment for additional information.



TRANSPORTER


fifth-wheel towing unit

[weight: approximately 69,445 lbs (31 500 kg)]

Radius & capacities


LIEBHERR 120 K

2/4-Part Line

Hook Radius	Maximum Capacity – Radius 	ft m	72	85	98	105	108	115	118	121	125	131	135	138	141	148	151	157	164
			22.0	26.0	30.0	32.0	33.0	35.0	36.0	37.0	38.0	40.0	41.0	42.0	43.0	45.0	46.0	48.0	50.0
164 ft 50.0m	8,820 lbs – 62 ft 4 000 kg – 18.9m	lbs kg	7,209 3 270	5,776 2 620	4,740 2 150	4,343 1 970	4,145 1 880	3,814 1 730	3,660 1 660	3,527 1 600	3,395 1 540	3,131 1 420	3,020 1 370	2,910 1 320	2,800 1 270	2,760 1 250	2,760 1 250	2,760 1 250	2,760 1 250
148 ft 45.0m	8,820 lbs – 72 ft 4 000 kg – 21.8m	lbs kg	8,708 3 950	7,010 3 180	5,798 2 630	5,335 2 420	5,115 2 320	4,718 2 140	4,542 2 060	4,365 1 980	4,211 1 910	3,924 1 780	3,860 1 750	3,860 1 750	3,860 1 750				
131 ft 40.0m	8,820 lbs – 84 ft 4 000 kg – 25.6m	lbs kg	8,820 4 000	8,664 3 930	7,231 3 280	6,658 3 020	6,393 2 900	5,930 2 690	5,710 2 590	5,511 2 500	5,313 2 410	5,290							
115 ft 35.0m	8,820 lbs – 94 ft 4 000 kg – 28.6m	lbs kg	8,820 4 000	8,820 4 000	8,311 3 770	7,650 3 470	7,363 3 340	7,055 3 200											


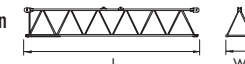

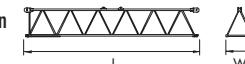
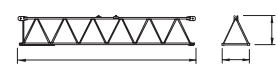
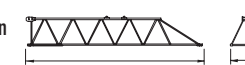
NOTE! 2/4-part operation available only with jib at 0°.

4-Part Line

Hook Radius	Maximum Capacity – Radius 	ft m	72	85	98	105	108	115	118	121	125	131	135	138	141	148	151	157	164
			22.0	26.0	30.0	32.0	33.0	35.0	36.0	37.0	38.0	40.0	41.0	42.0	43.0	45.0	46.0	48.0	50.0
164 ft 50.0m	17,635 lbs – 37 ft 8 000 kg – 11.2m	lbs kg	7,209 3 270	5,776 2 620	5,512 2 500	5,225 2 370	5,004 2 270	4,630 2 100	4,453 2 020	4,277 1 940	4,123 1 870	3,836 1 740	3,704 1 680	3,571 1 620	3,461 1 570	3,241 1 470	3,131 1 420	2,866 1 300	2,760 1 250
148 ft 45.0m	17,635 lbs – 42 ft 8 000 kg – 12.8m	lbs kg	8,708 3 950	7,716 3 500	6,658 3 020	6,129 2 780	5,886 2 670	5,445 2 470	5,247 2 380	5,049 2 290	4,872 2 210	4,542 2 060	4,387 1 990	4,255 1 930	4,123 1 870	3,860 1 750			
131 ft 40.0m	17,635 lbs – 49 ft 8 000 kg – 14.8m	lbs kg	10,714 4 860	9,193 4 170	7,672 3 480	7,077 3 210	6,790 3 080	6,305 2 860	6,085 2 760	5,864 2 660	5,666 2 570	5,290							
115 ft 35.0m	17,635 lbs – 54 ft 8 000 kg – 16.4m	lbs kg	12,588 5 710	10,229 4 640	8,576 3 890	7,893 3 580	7,606 3 450	7,055 3 200											

NOTE! 4-part operation available only with jib at 0°.

Component Information

Description		Dimensions L x W x H	Weight	Description		Dimensions L x W x H	Weight
Tower Section		8'-3" x 3'-8" x 3'-8" 2.52m x 1.11m x 1.11m	1,720 lbs 780 kg	Jib Section ②		16'-11" x 3'-4" x 3'-0" 5.16m x 1.02m x 0.92m	485 lbs 220 kg
Jib Section ①		17'-2" x 3'-4" x 3'-3" 5.24m x 1.02m x 0.99m	770 lbs 350 kg	Jib Section ③		15'-6" x 3'-4" x 2'-11" 4.73m x 1.02m x 0.89m	375 lbs 170 kg

NOTE! Weights and dimensions are approximate. Scale components before lifting.

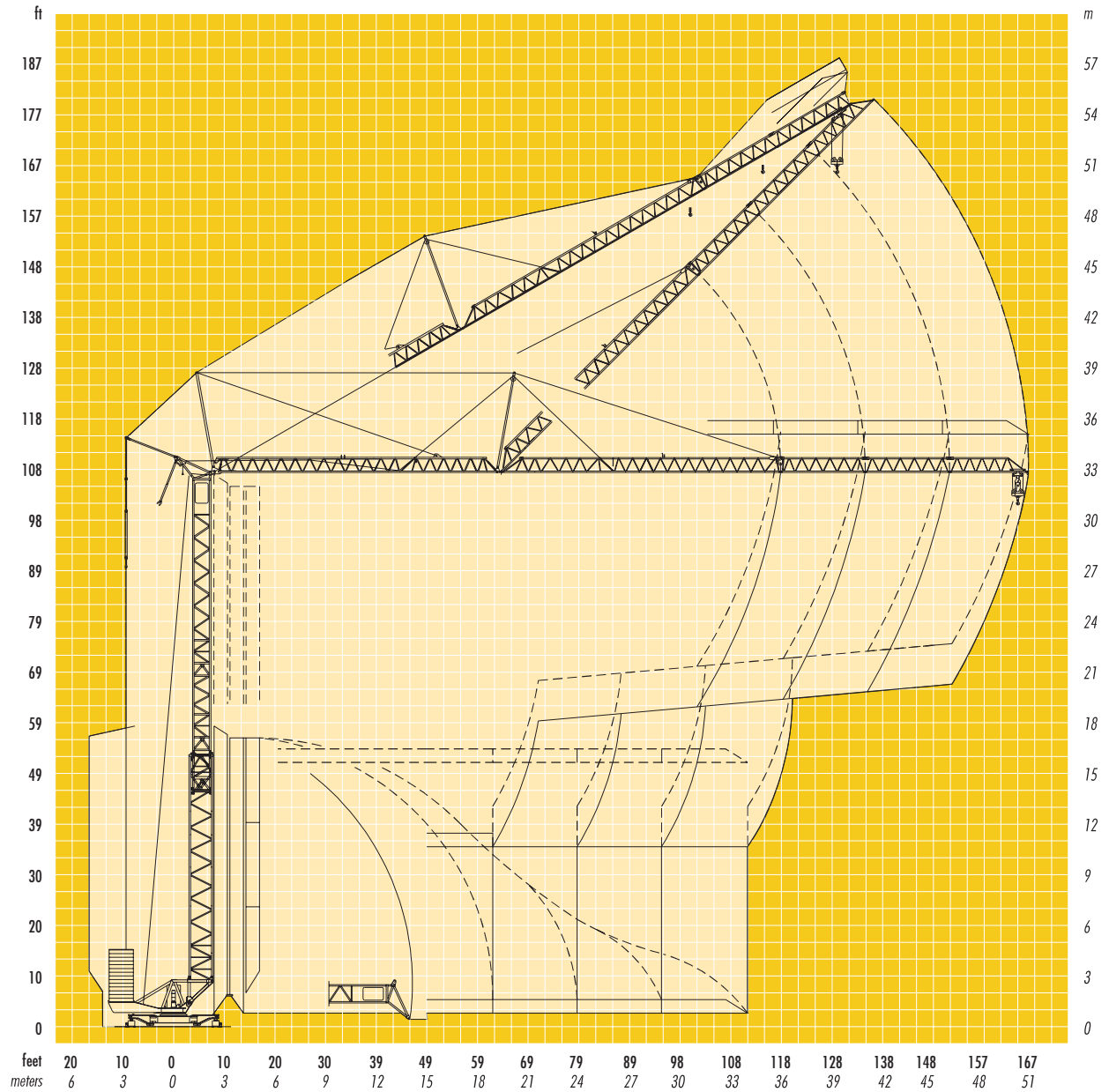
Creative Lifting Services Inc.

Call Will or Kelly Phone: 303-659-8102 Fax: 303-659-5314

will@creativelifting.com kelly@creativelifting.com www.creativelifting.com

SPECIFICATIONS

LIEBHERR Tower crane model 120 K



Erection Sequence

SPECIFICATIONS

LIEBHERR Tower crane model 120 K

Hoist Speed and Capacity

Hoist Unit	2-Part Line				
	Step	Capacity	Line Speed	Capacity	Line Speed
32 hp (24 kW) AC hoist unit <ul style="list-style-type: none">• 3-step motor with pole-changing speed control	1	up to 8,820 lbs	@ 21 fpm	up to 4 000 kg	@ 6.5 m/min
	2	up to 8,820 lbs	@ 98 fpm	up to 4 000 kg	@ 30 m/min
	3	up to 4,410 lbs	@ 196 fpm	up to 2 000 kg	@ 60 m/min
	4-Part Line				
	1	up to 17,640 lbs	@ 11 fpm	up to 8 000 kg	@ 3.25 m/min
	2	up to 17,640 lbs	@ 49 fpm	up to 8 000 kg	@ 15 m/min
	3	up to 8,820 lbs	@ 98 fpm	up to 4 000 kg	@ 30 m/min

NOTE! Capacities and line speeds indicated in the charts above will vary depending on the amount of hoist rope installed. This crane model may be equipped with a hoist unit other than those specified in the data above. To verify, check the serial number of the crane and refer to the Liebherr 120 K Operation Manual for additional information.

Motor Information

Drive Unit	Horsepower	Kilowatts	Speed	
Trolley	6.7 hp	5.0 kW	33/108/220 fpm	10/33/67 m/min
Swing	8.4 hp	6.3 kW	0.8 rpm	
Luffing	8.0 hp	6.0 kW	0° - 45° in 2 min	
Travelling	2 x 2.7 hp	2 x 2.0 kW	82 fpm	25 m/min

Power Requirements

480 V — 3-phase — 60 Hz — 100 Amperes

Creative Lifting Services Inc.

Call Will or Kelly Phone: 303-659-8102 Fax: 303-659-5314

will@creativelifting.com kelly@creativelifting.com www.creativelifting.com