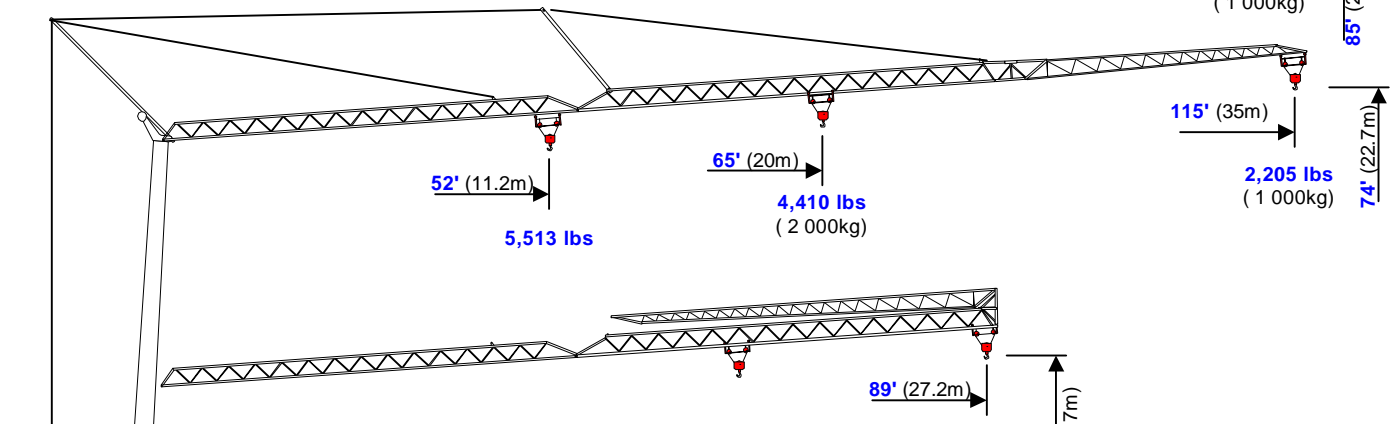
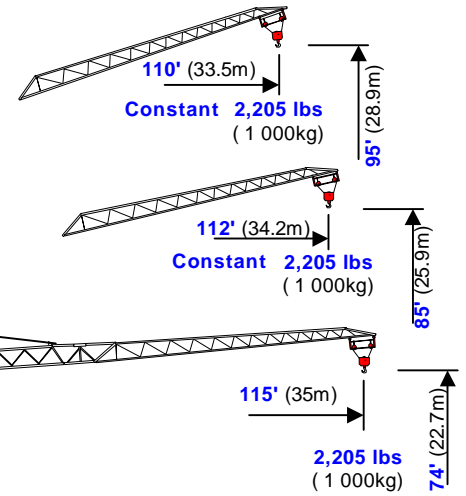


Self-Erecting Crane

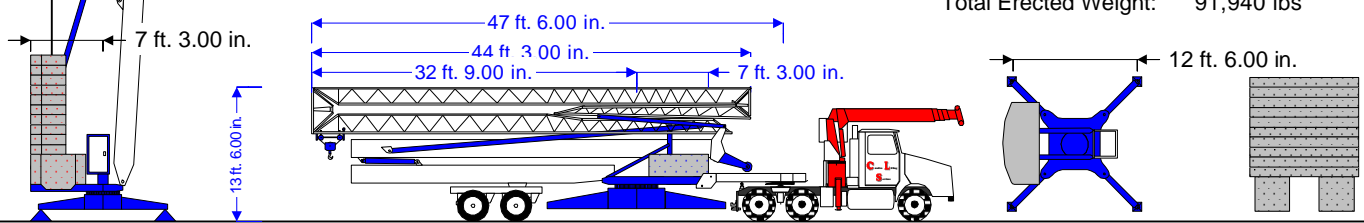
**22115 (202)**

**74' - 115' - 2,205 lbs**  
(23 - 35 - 1000)



**Power Requirements**  
Single Phase OR Three Phase  
240V or 480V

- Base Ballast X 2            8,820 lbs
- Ballast Blocks X 10        4,410 lbs
- Total Ballast:            61,740 lbs
- Crane Weight:             30,200 lbs
- Total Erected Weight:    91,940 lbs



Hook	ft.	52	56	62	69	75	82	89	95	102	108	115
Radius	meters	15.9	17.0	19.0	21.0	23.0	25.0	27.0	29.0	31.0	33.0	35.0
Maximum	lbs.	5,513	5,094	4,498	3,991	3,594	3,263	2,977	2,734	2,536	2,359	2,205
Capacities	tonnes	2.50	2.31	2.04	1.81	1.63	1.48	1.35	1.24	1.15	1.07	1.00

**Creative Lifting Services Inc.**

Call Kelly or Will Phone: 303-659-8102 Fax: 303-659-5314

kelly@creativelifting.com will@creativelifting.com www.creativelifting.com