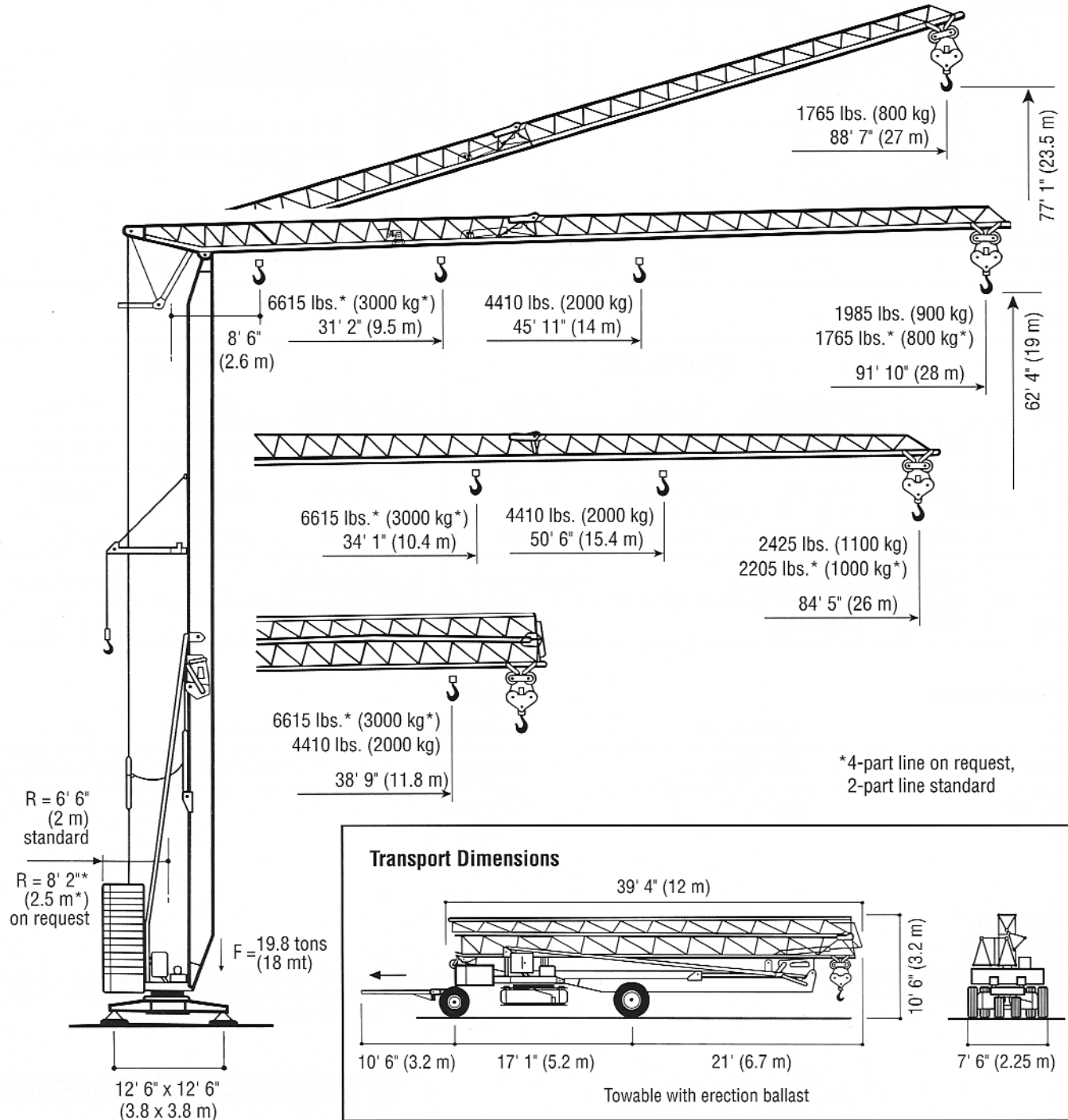




COMEDIL CBR 28H

Hydraulic Self-Erecting Tower Crane
6615 lbs. (3000 kg)
Lifting Capacity

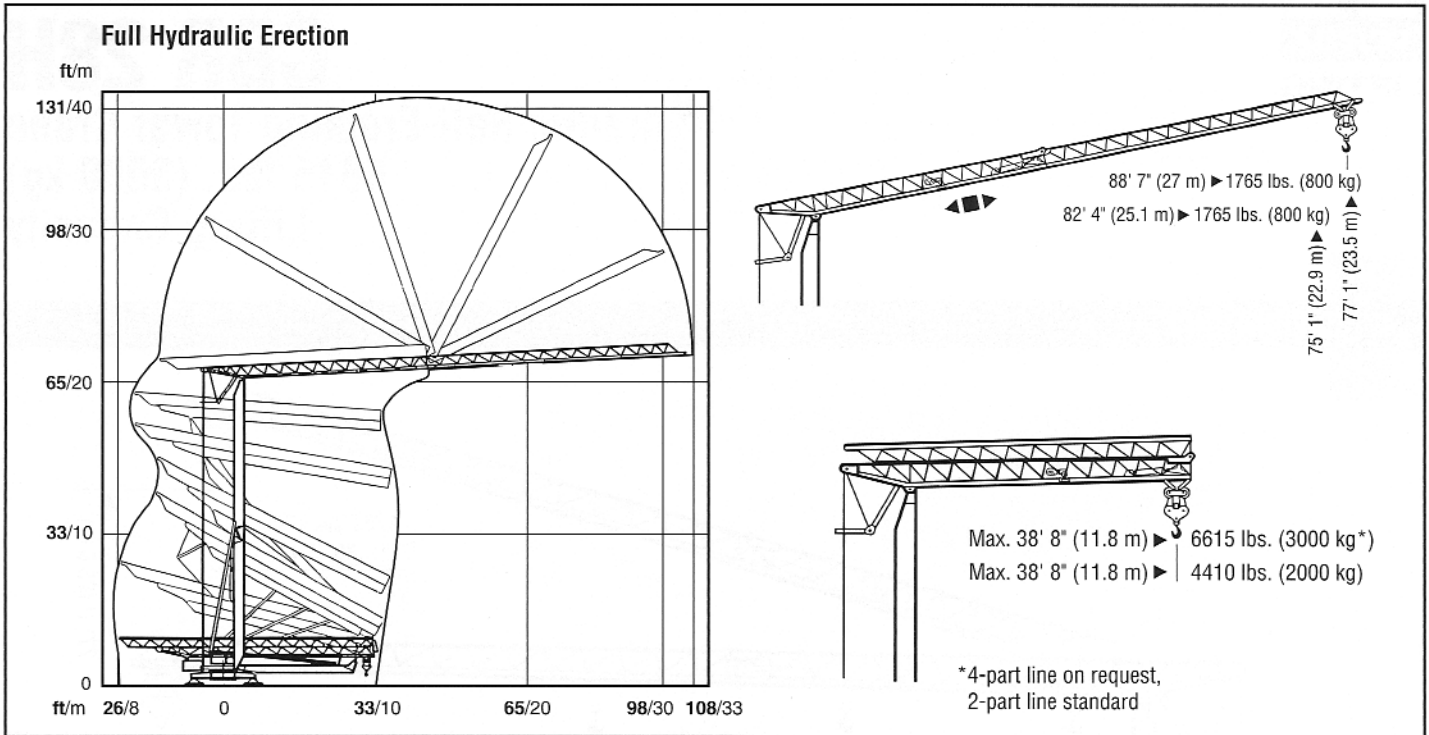
SPECIFICATIONS



Machines shown may have optional equipment.

simple, available and cost effective™

COMEDIL CBR 28H



Mechanisms

		2-PART LINE			4-PART LINE		
		ft./min (m/min)	lbs. (kg)	HP (kW)	ft./min (m/min)	lbs. (kg)	HP (kW)
Hoisting		16.4 (5)	4410 (2000)	3.75 (1.7)	8.2 (2.5)	6615 (3000)	3.75 (1.7)
		65.6 (20)	4410 (2000)	15 (6.6)	32.8 (10)	6615 (3000)	15 (6.6)
		131.2 (40)	2205 (1000)	15 (6.6)	65.6 (20)	4410 (2000)	15 (6.6)
Trolley		68.9/137.8 (21/42)		1.5/3.0 (1.1/2.2)	68.9/130.8 (21/42)		1.5/3.0 (1.1/2.2)
Slewing		0 - 0.9 RPM		1.5 (1.1)	0 - 0.9 RPM		1.5 (1.1)

Power Requirements

Erection	3.0 HP (2.2 kW)
Main Power Supply	380V (50 Hz)
Required Power	15 kVA

Weights

Crane Weight	19,840 lbs. (9000 kg)
Ballast weight	33,070 or 28,660 lbs.* (15 000 or 13 000 kg*)
*On request	

For more information, product demonstration, or details on lease and rental plans, please contact your local Terex Towers Distributor.

We reserve the right to amend these specifications at any time without notice. The only warranty applicable is our standard written warranty applicable to the particular product and sale. We make no other warranty, expressed or implied.

TEREX TOWERS

202 Raleigh Street • Wilmington, NC 28412 USA
(910) 395-8500 • FAX: (910) 395-8547